

Adopter et utiliser les standards IIIF pour vos corpus d'images numériques

Atelier DHNord 2020 - 18 novembre 2020

Régis ROBINEAU

Biblissima - Campus Condorcet / EPHE-PSL

 @regisrob

Déroulé de l'atelier

Matin (10h-12h)

- ❖ Tour de table et préambule (10')
 - ❖ **Introduction à IIF (1h15')**
 - ❖ Questions (20 min.)
 - ❖ Présentation des exercices (15 min.)
-

Après-midi (13h-14h15)

- ❖ **Atelier pratique (1h15)**

14h15-15h : atelier de Tom Monnier "Extraction automatique au sein de documents IIF"

Documents

Atelier pratique (après-midi) :

[https://github.com/regisrob/Atelier IIIF Conference D
HNord 2020#atelier-iiif-dhnord2020](https://github.com/regisrob/Atelier_IIIF_Conference_DHNord_2020#atelier-iiif-dhnord2020)

Introduction à IIIF

1. Pourquoi IIIF ?
2. IIIF pour faire quoi ?
3. Les APIs IIIF : comment ça marche ?
 - API Image
 - API Presentation

3-I-F / I-3-F / triple-i-F / tripeulaief ? 🤔



International
Image
Interoperability
Framework

iiif.io

IIIF ?

Une **communauté**,

... qui développe des **APIs partagées**,

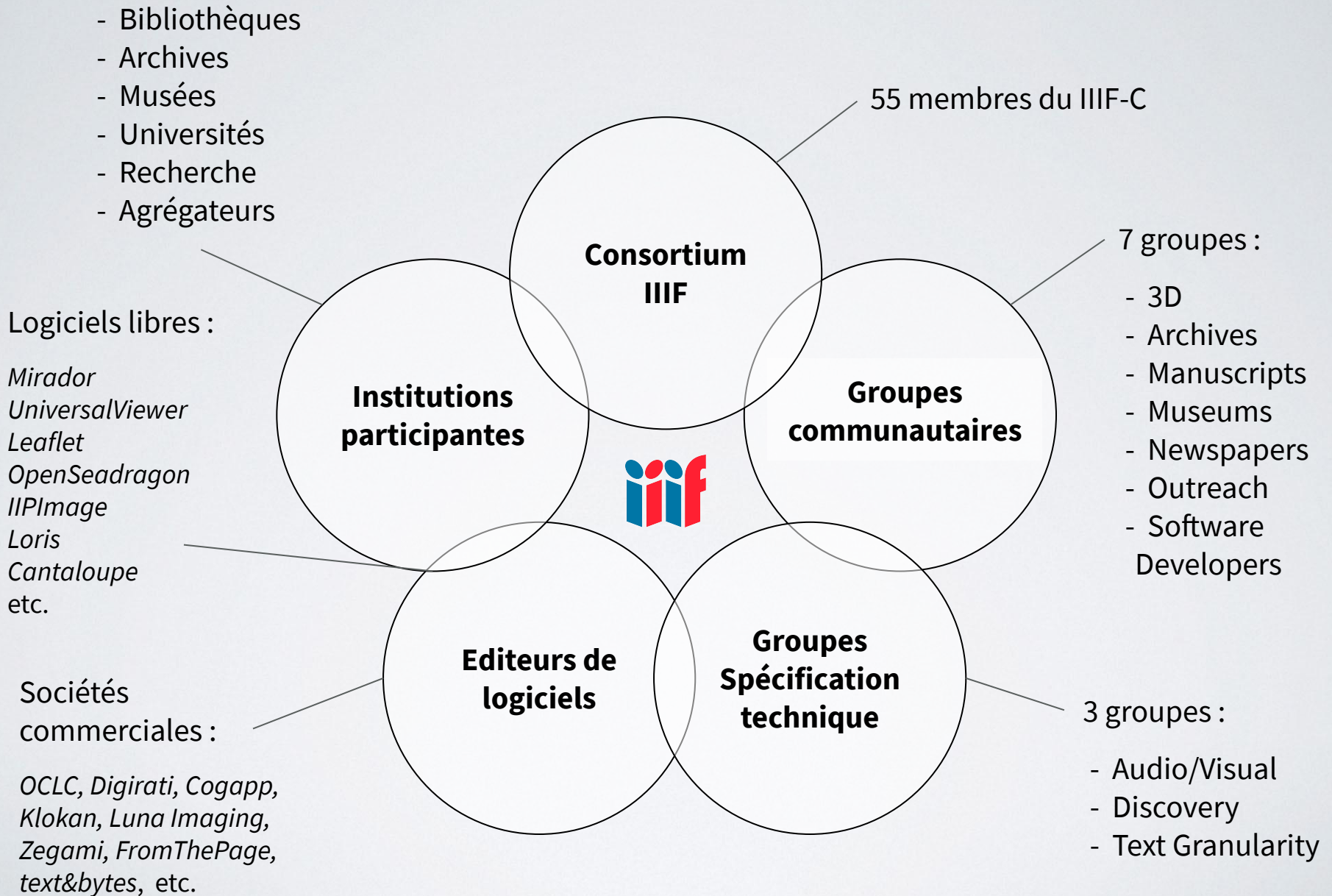
... les implémentent dans des **logiciels**,

... exposent des **contenus** interopérables sur le Web

Des centaines d'acteurs impliqués



La communauté IIF



Musées

British Museum
National Gallery of Art
Smithsonian Institution
The J. Paul Getty Trust
The Walters Art Museum
Yale Center for British Art
SMK
Et al.

Agrégateurs / portails

ARTstor
Biblissima
OCLC CONTENTdm
DPLA
Europeana
Internet Archive
Wikimedia Foundation

Bibliothèques nationales

Autriche
Bavière
British Library
Cuba
Danemark
Egypte
France
Israël
Rép. tchèque
Nouvelle-Zélande
Norvège
Pologne
Ecosse
Serbie
Wales
Vatican
Qatar
USA (LoC)

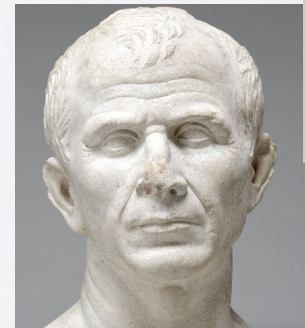
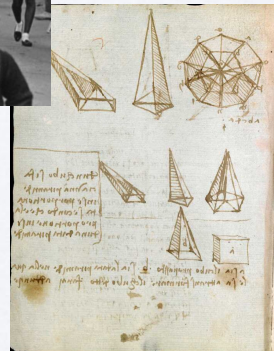
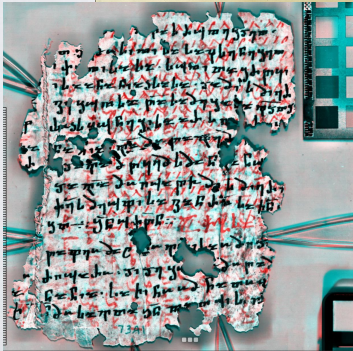
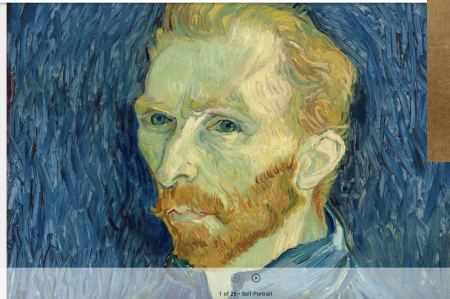
Universités / Instituts de recherche

Cambridge
Cornell
Gand
Göttingen
Harvard
Leiden
MIT
Oxford
Princeton
Stanford
Edinburgh
Tokyo
Toronto
UCLA
Wellcome Trust
Yale

Et bien d'autres...

Des millions (milliards ?) d'objets numériques

Statues de "Taharikiou", en atelier ... Lucrèce (par de Barchino), A.



Un écosystème de logiciels compatibles

Awesome International Image Interoperability Framework (IIIF)



A list of lists of awesome [IIIF](#) resources.

The International Image Interoperability Framework (IIIF) is a group of standard APIs around sharing and reuse of media. It is also a growing community of galleries, libraries, archives, museums, companies, and others who develop the standards and interoperable software implementations. Content includes helpful links around each of the standards, demonstrations of their use, and tutorials and presentations. The list is especially helpful for orienting new community members and developers.



[CONTRIBUTING](#) [Guidelines](#)

Disclaimer: This list is created for informational purposes only and any links do not constitute an endorsement, recommendation, or favoring by the IIIF Consortium.

Contents

- [Standards](#)
- [Image Servers](#)
- [Image Server Shims](#)
- [Image Viewers](#)
- [Image API Libraries](#)
- [Image Tools](#)
- [Presentation API Libraries](#)
- [Presentation API Shims](#)
- [Presentation Manifest Tools](#)

<https://github.com/IIIF/awesome-iiif>

Pourquoi IIF ?

Contexte

- Prolifération de bibliothèques numériques depuis les années 2000
- Manque de coordination technique
- Délivrer des images HR sur le Web ~~est~~ était:
 - ... difficile
 - ... coûteux
 - ... lent
 - ... verrouillé

Morale de l'histoire...

- **Pas d'interopérabilité** entre systèmes, pas de passerelles
- Un grand nombre **d'applications *ad hoc***, développées “from scratch” (coûteux et difficile à maintenir)
- **Expérience utilisateur pauvre**, éventail de fonctionnalités limité...
- ◆ en décalage avec le tournant numérique et les nouveaux usages (DH, enseignement à distance, open access etc.)

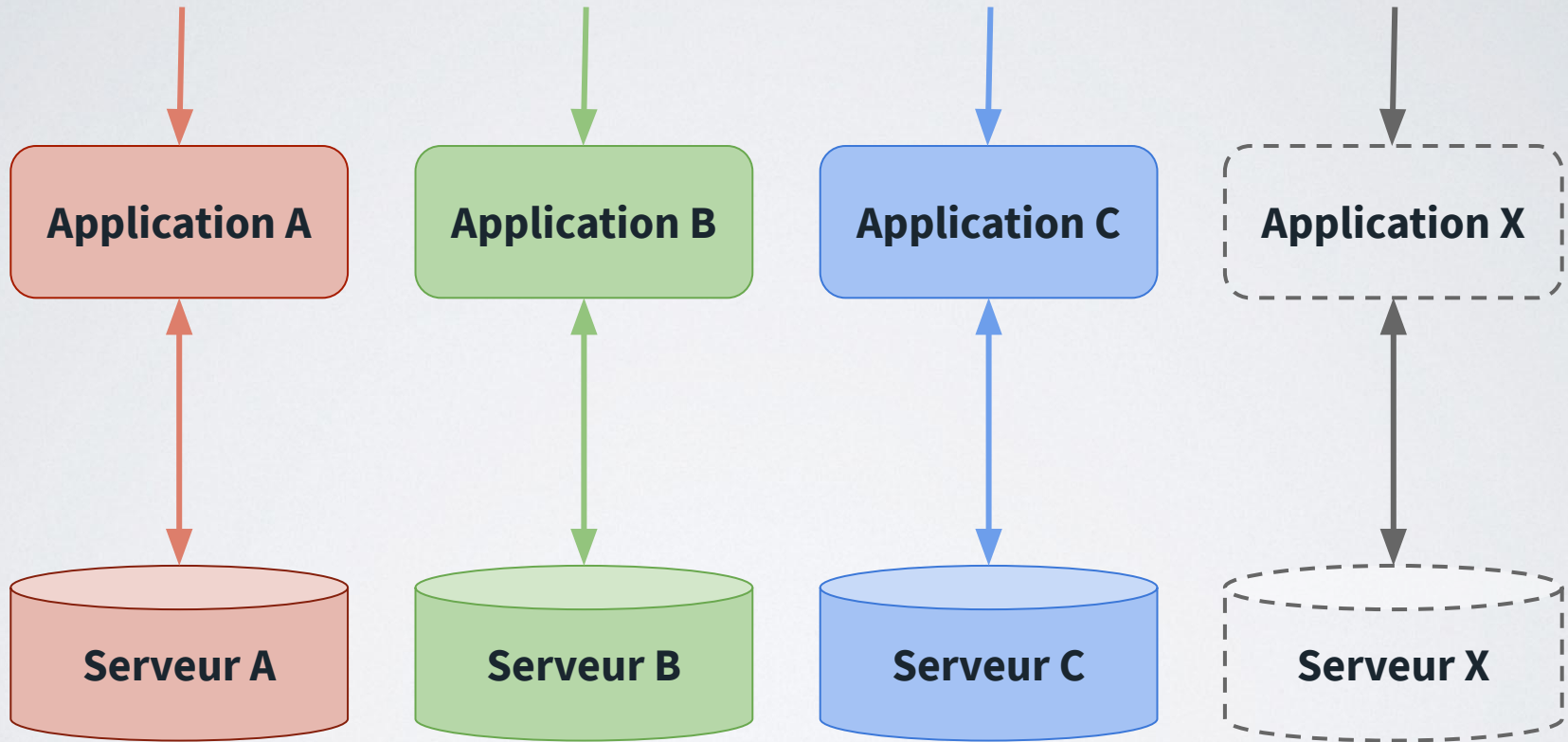
Besoins communs

- ✓ Je veux un serveur d'images plus performant, mais je suis "prisonnier" d'un logiciel propriétaire
- ✓ Je veux proposer du **zoom profond**
- ✓ Je veux que les utilisateurs puissent **comparer** des objets présents dans mes collections, et **au-delà de mes collections**
- ✓ Je veux permettre la **citation et le partage** des images
- ✓ Je veux que les utilisateurs puissent **annoter** les images en ligne
- ✓ Je veux faciliter la **réutilisation** des images

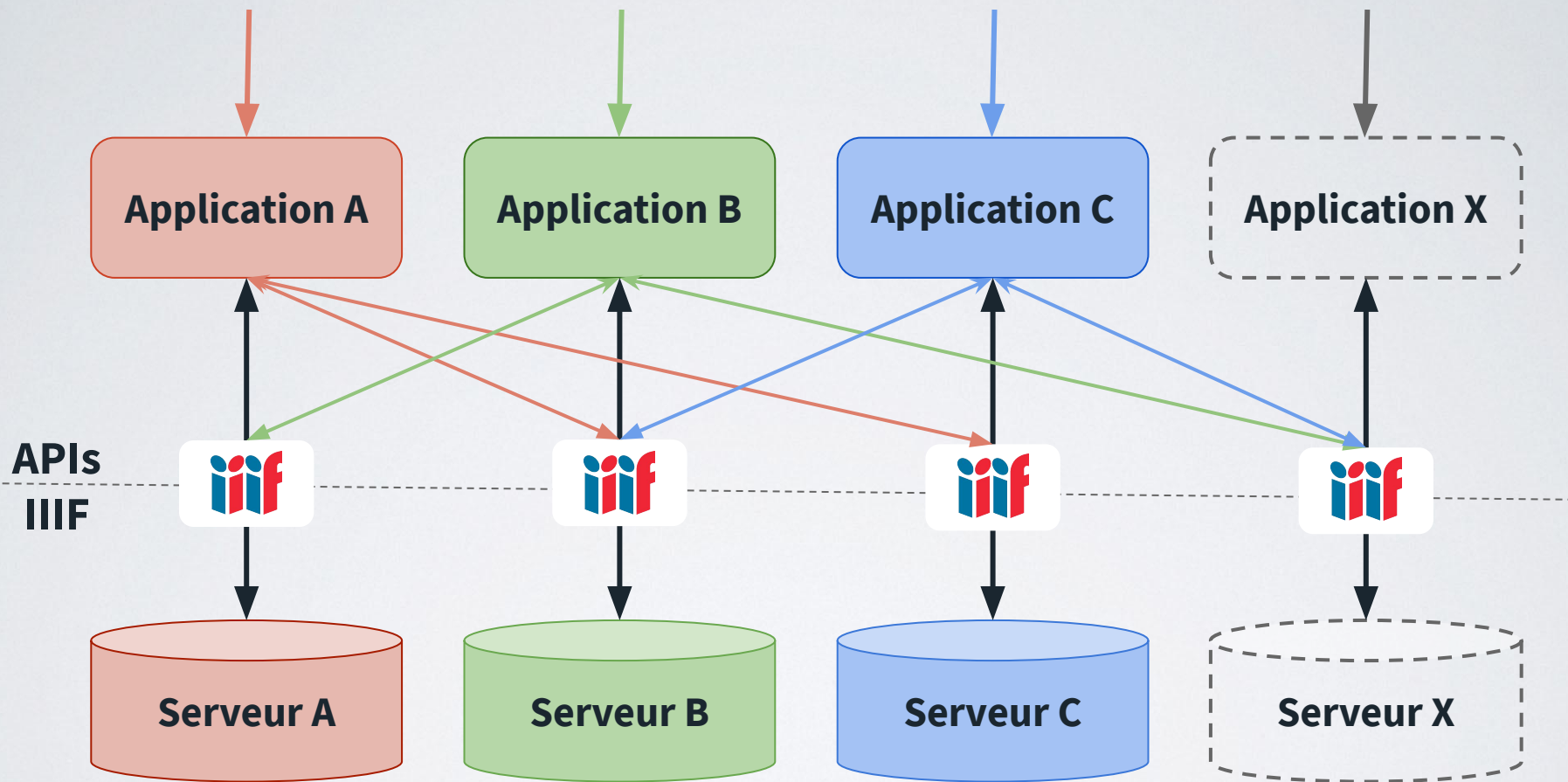
Mais...

- ✓ sans avoir à réinventer la roue sur chacun de ses points
- ✓ sans nécessairement perdre le contrôle de “mes” images :
... je souhaite les partager, mais tout en ayant les moyens de suivre et de mesurer leur utilisation.

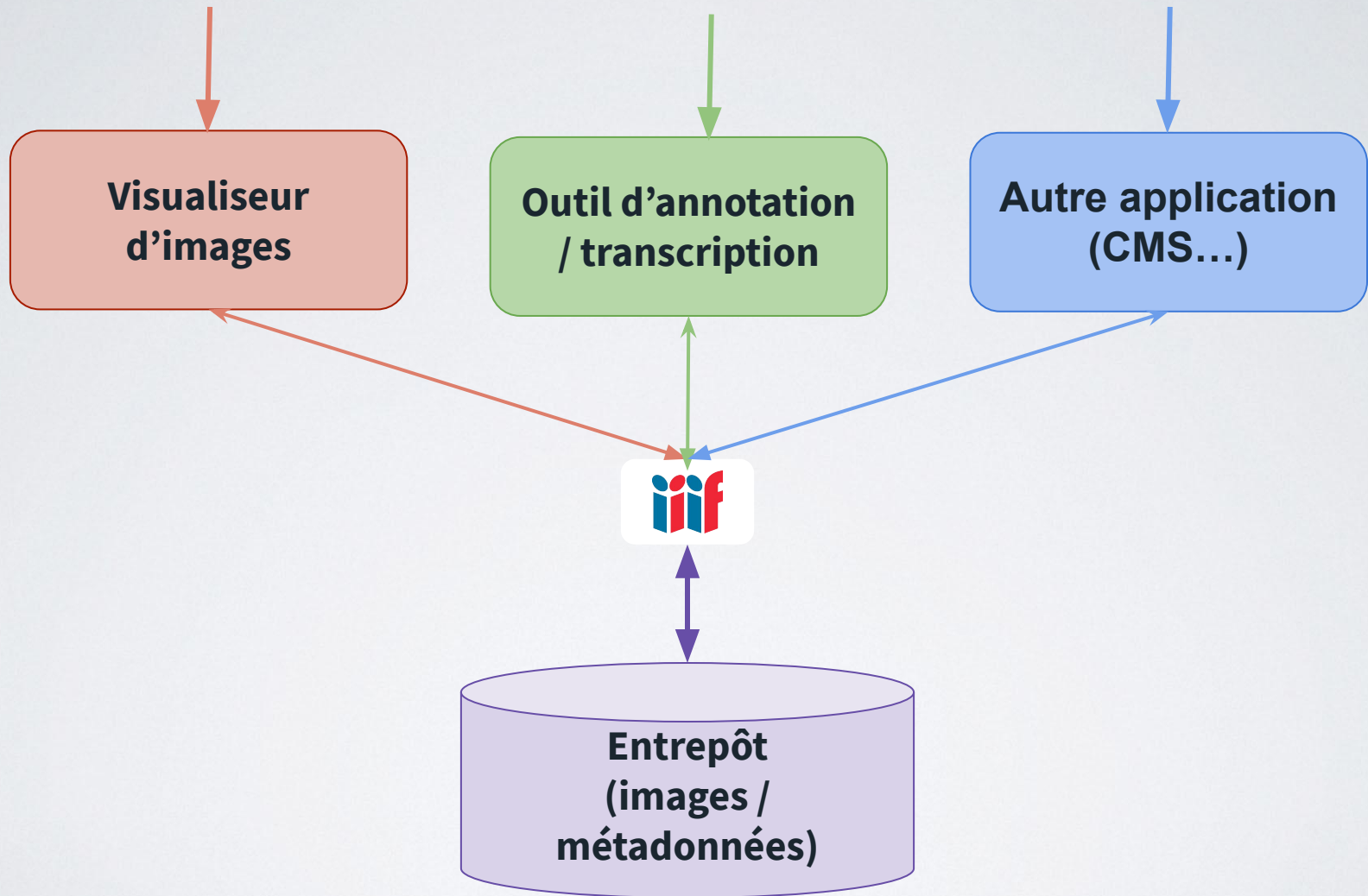
Les problèmes avec les silos



La solution : des APIs partagées



La solution : des APIs partagées



Vision de IIIF

Créer un **cadre technique commun** grâce auquel les fournisseurs d'images numériques peuvent

... délivrer leurs images de manière **standardisée** sur le Web

... afin de les rendre **consultables, manipulables et annotables**

... par n'importe quel **logiciel compatible**

IIIF pour faire quoi ?

*Cas d'application :
aperçu de IIIF en action*

Zoomer et inspecter en détail



[Scrolls illustrating a story about the Sagami River](#), Kyoto [1660?-1670?].

Princeton University Library



[Ōmi Kuni-ezu](#) -- [近江國繪圖](#), Japan, 1837 (345 x 504 cm).

Stanford University Libraries



ATTRIBUTION ✕

Hodan Yusuf



[Toy Lion](#) (Modèle 3D)
The Nomad Project

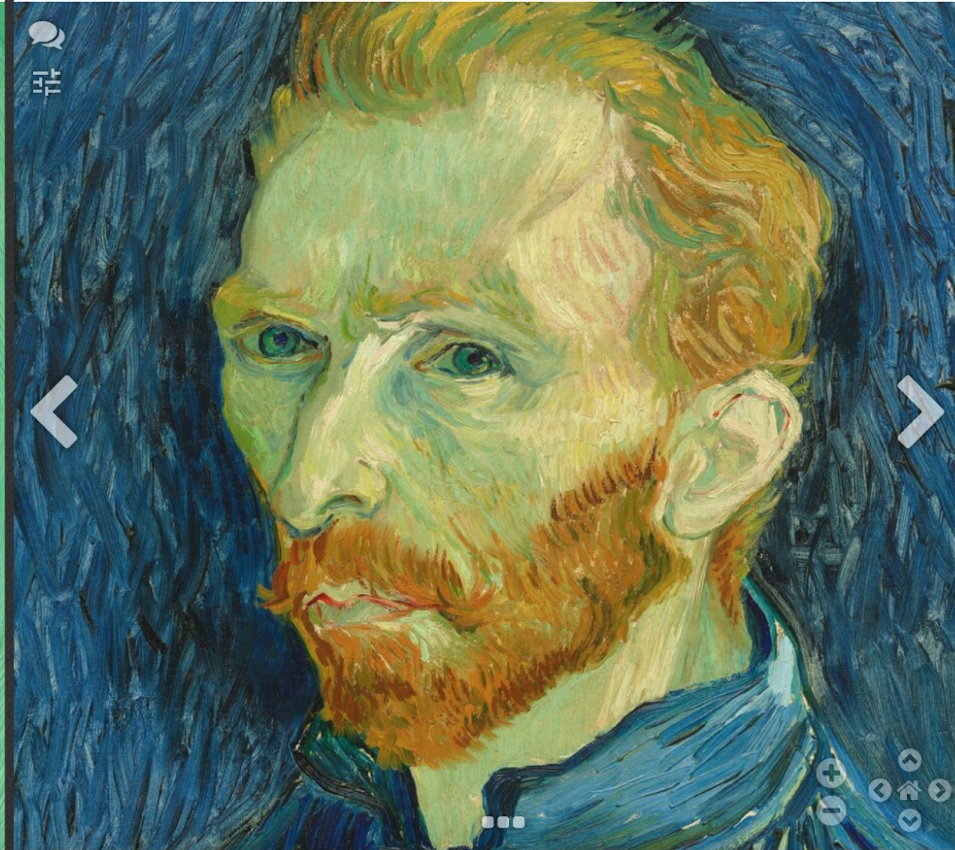
Comparer...

à travers les collections

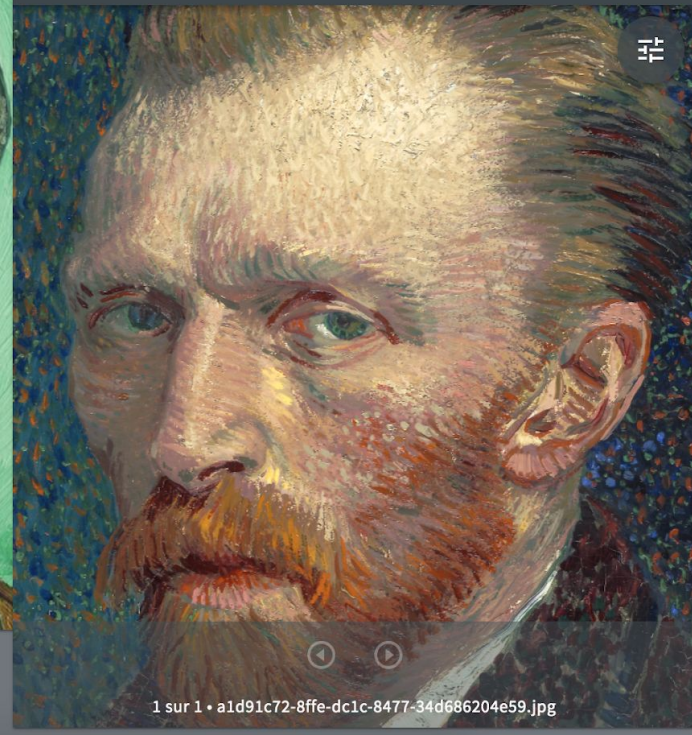
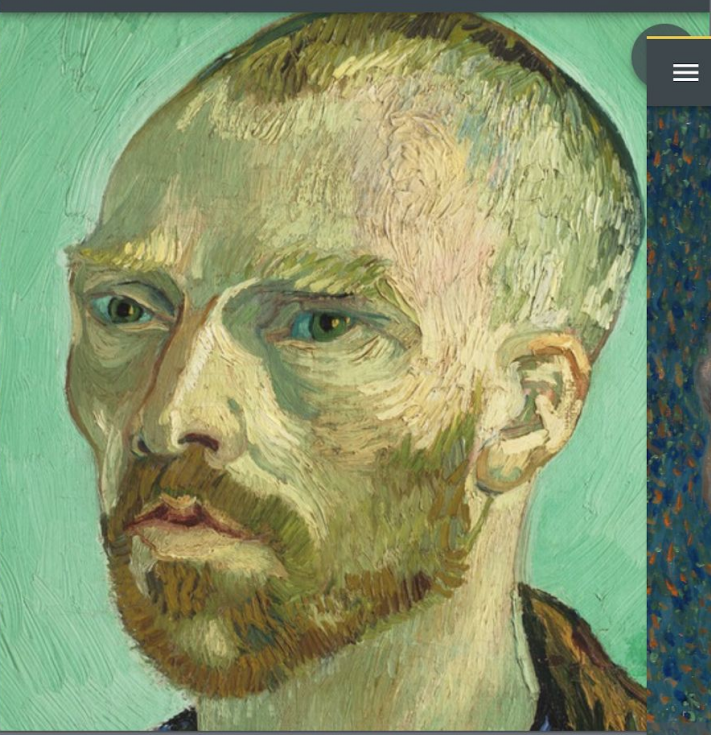
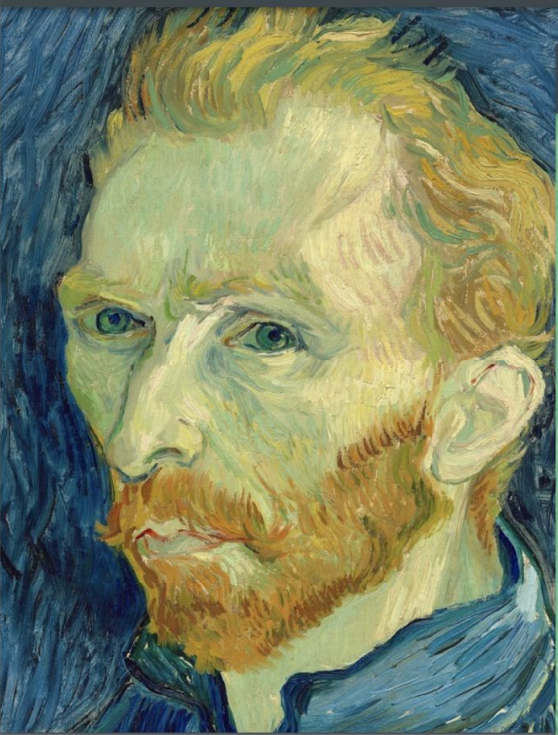
Self-Portrait Dedicated to Paul Gauguin



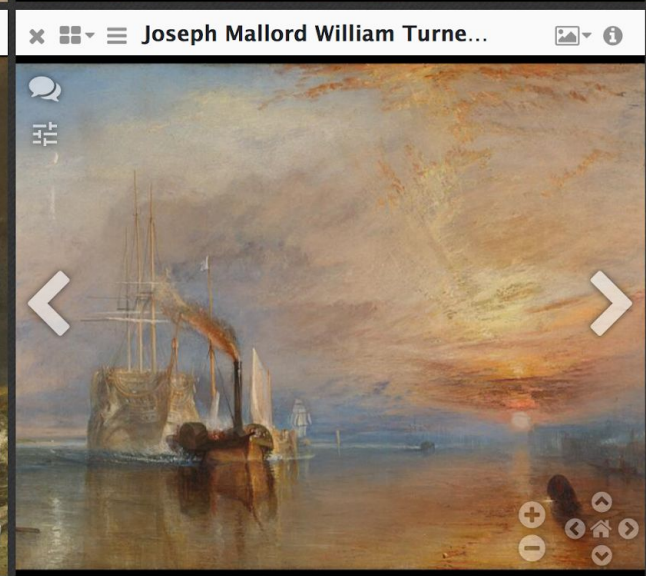
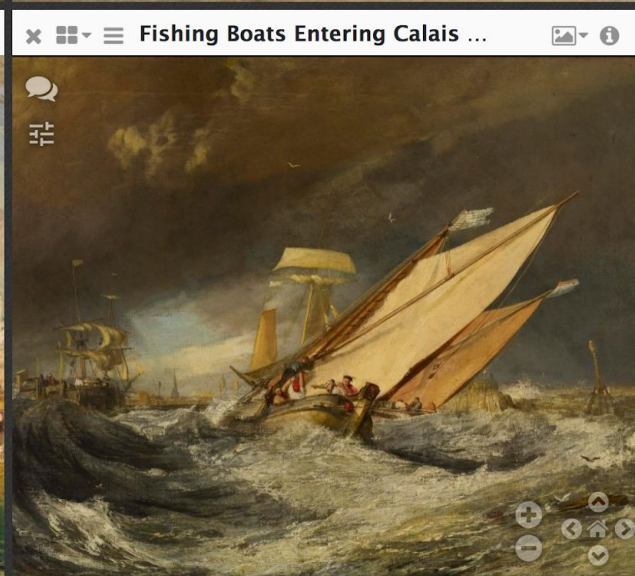
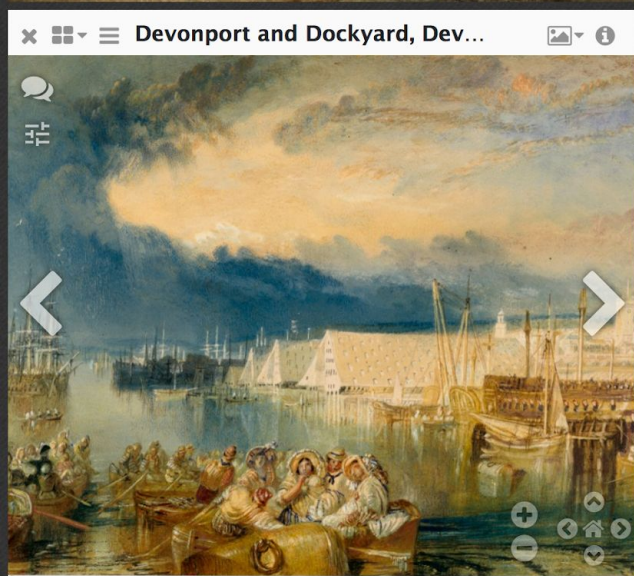
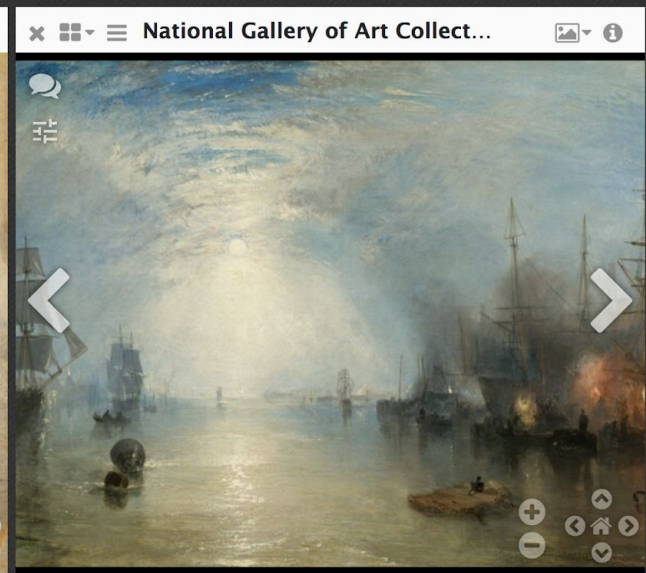
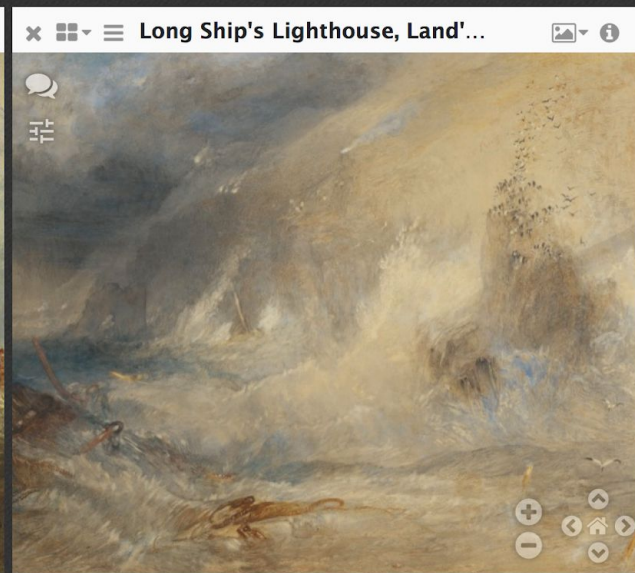
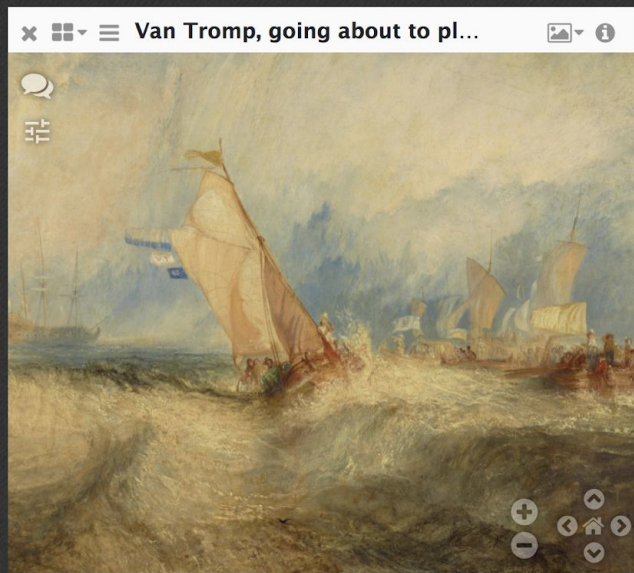
National Gallery of Art Collection Highlights



Visualiseur Mirador (version 2) - <http://projectmirador.org>



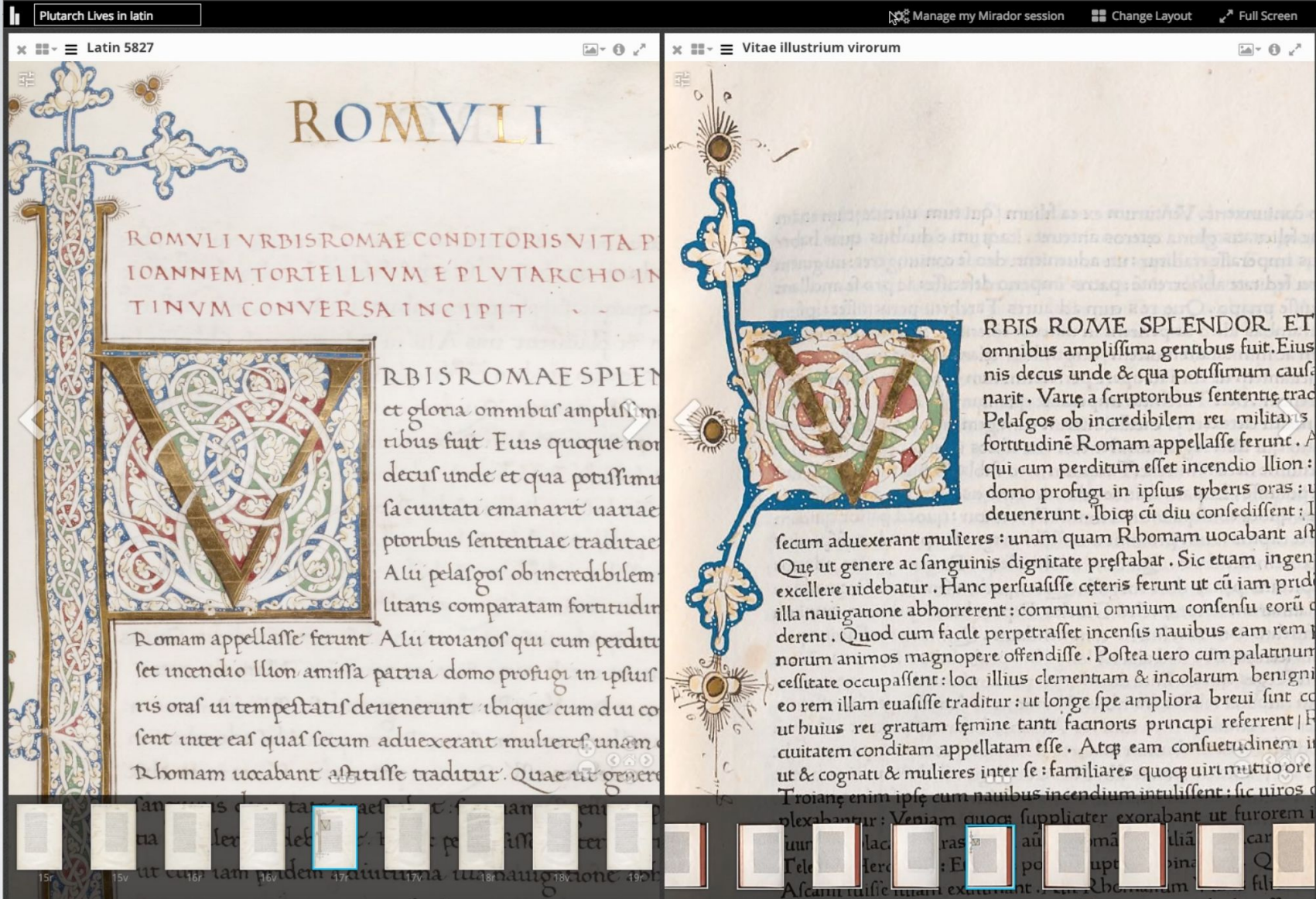
Visualiseur Mirador (version 3) - <http://projectmirador.org>



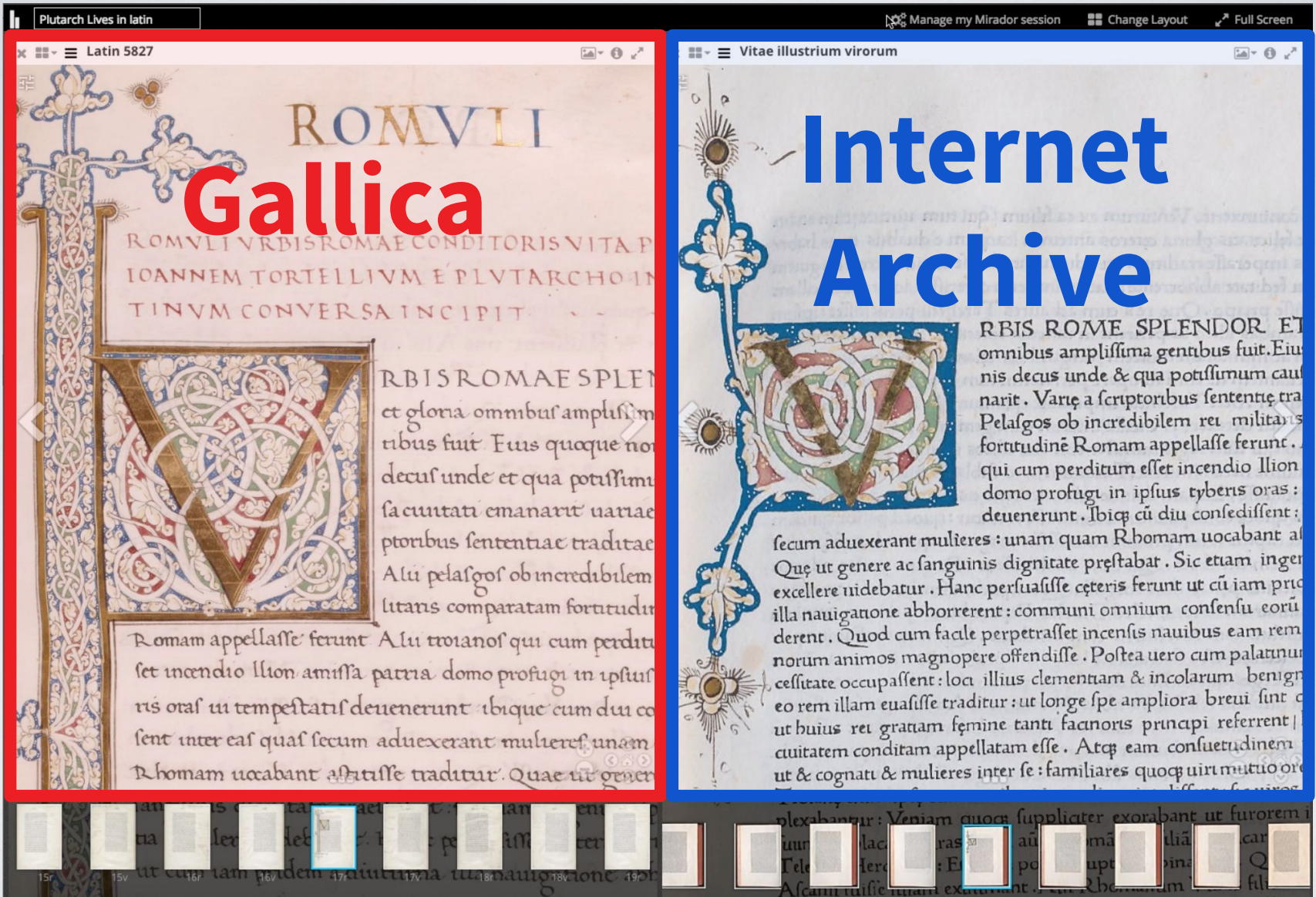
Tableaux de Joseph Turner de 5 musées en GB et USA



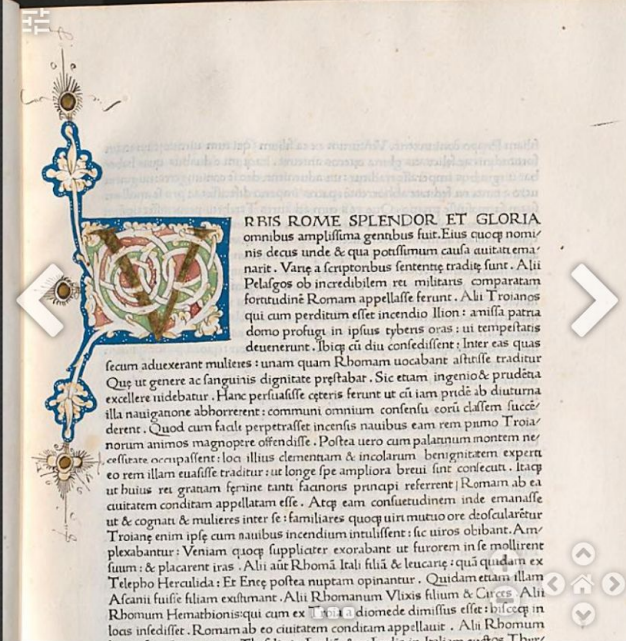
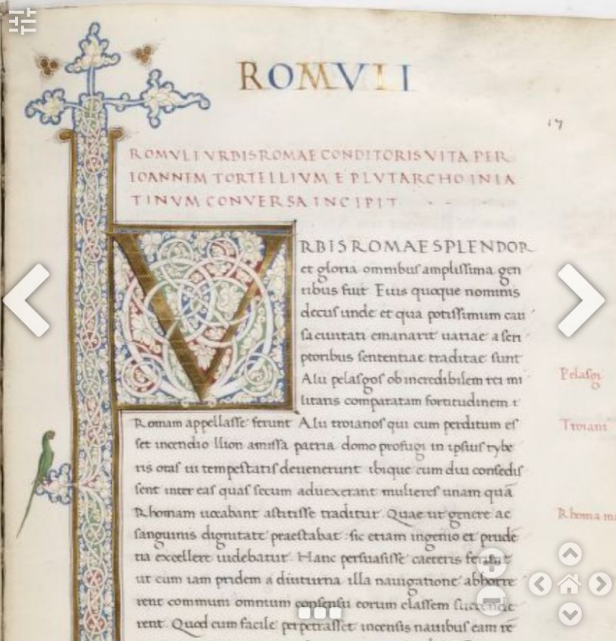
[Compariscope](#) (Victoria and Albert Museum)



Comparaison d'un témoin manuscrit (BnF) et d'un exemplaire incunable (BSG) dans Mirador [Démo Biblissima](#) (IIIF Conference 2017 - The Vatican)



[Démo Biblissima](#) (IIF Conference 2017 - The Vatican)



Ajouter un objet





ZOOM  

VIEWS   

MODES  



[The Leiden Viewer](#) (The Leiden Collection)

ZOOM + - VIEWS V XR IR MODES [Icons]

CLOSE

The x-ray image reveals a foot, showing that in the original composition (Stage 1) Rubens depicted a twelfth Hora here. He later painted out this figure, filling the area instead with dark clouds. Once we know where to look, a ghost of this foot is visible on the painting's surface.

- Antwerp
- Paintings in Antwerp c. 1610-1612
- Conclusion
- Interactive Timeline

7 Through the generosity of colleagues, it also has been possible to examine a number of related works by Rubens (along with their available technical documentation) for comparison to *The Fall of Phaeton*,¹⁶ including *Hero*

[Édition numérique enrichie \(article JHNA\)](#) - *The Fall of Phaeton*, par Rubens

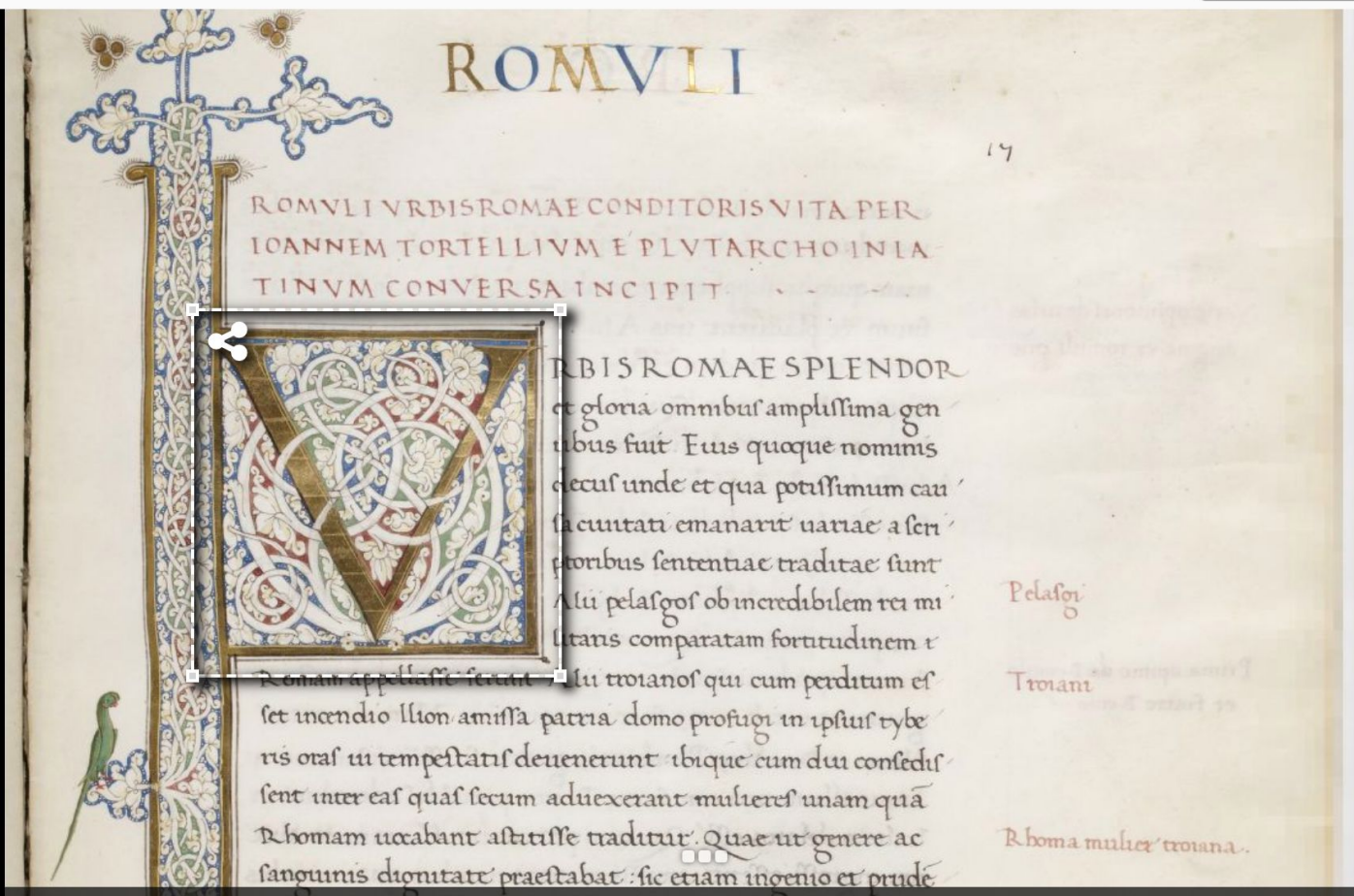
E. Melanie Gifford, "Rubens's Invention and Evolution: Material Evidence in The Fall of Phaeton," *Journal of Historians of Netherlandish Art* 11:2 (Summer 2019) DOI: [10.5092/jhna.2019.11.2.1](https://doi.org/10.5092/jhna.2019.11.2.1)

Jennifer Henel, "JHNA's Enhancements (or "JHNA 2.0")," *Journal of Historians of Netherlandish Art* 11:2 (Summer 2019) DOI: [10.5092/jhna.2019.11.2.2](https://doi.org/10.5092/jhna.2019.11.2.2)

Citer et partager



gallica.bnf.fr/iiif/ark:/12148/btv1b8446958b/f39/423,1322,1365,1135/,800/0/native.jpg



plat supéri...



contreplat ...



page de g...



page de g...



Ar



Av



1r



1v



2r



2v



3r



3v



4r



Crop and Re-size Images

1: Select Image Area

Use the mouse (or a fingertip) to select all or a portion of an image in the Crop Box (or enter numbers in the coordinates boxes below).

➤ You can also [select the entire image](#).



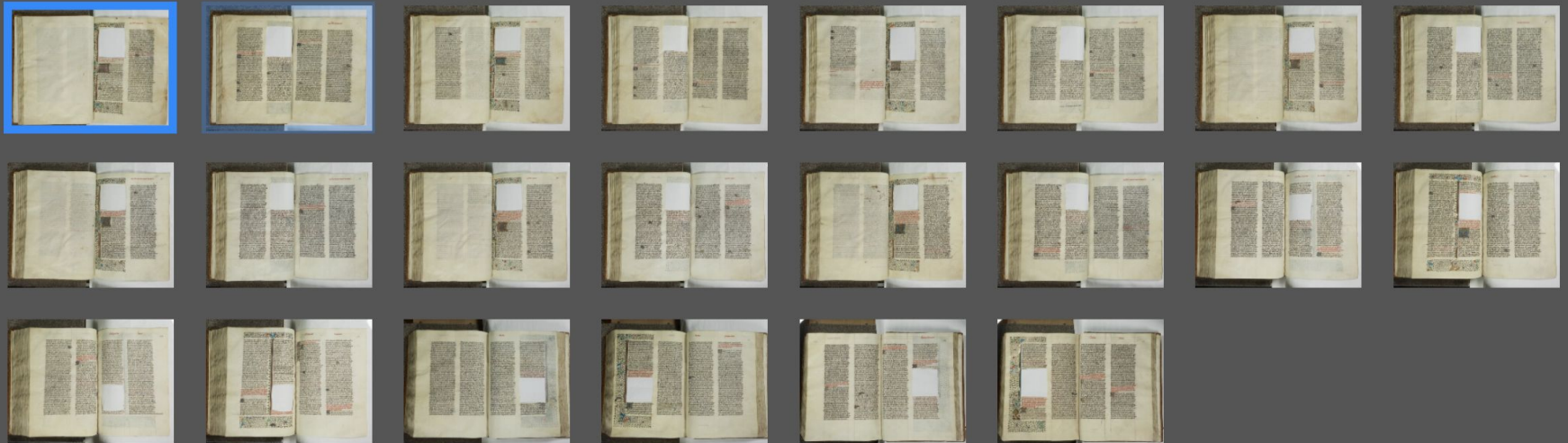
Combiner, reconstituer, remixer

IIIF pour assembler des ressources numériques (ou parties de ressources) issues de plusieurs sources :

- reconstituer virtuellement un objet ou une collection dispersée
- créer des “mash-up” de contenus image, audio, vidéo
- curation de contenus : expositions virtuelles, etc.

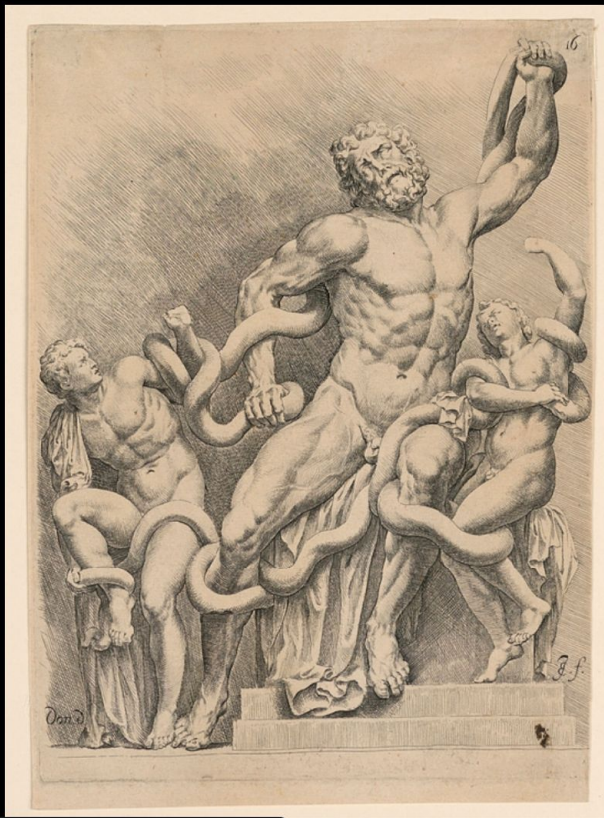
A propos

Reconstitution complète (2017)

 Afficher les miniatures ?

Reconstitution virtuelle d'un manuscrit mutilé - Grandes Chroniques de France, Châteauroux BM ms. 5 (Démo Biblissima)

<https://demos.biblissima.fr/chateauroux/osd-demo/>



Canvas Label: [image CHSDM-FB5A8F0586052-000001](#)



Manifest Metadata

Predetermined Fields | Custom Fields

Manifest Thumbnail
 There is no preview thumbnail for this manifest.
 + Add Manifest Thumbnail

Manifest URI
<https://jsonstorage.net/api/items/7ba0b03e-f171-44ef-a58e-2992145441db>

Label
 Laocoon

Description: French
 Description: Représentations du Laocoon
 Language: fr

Attribution
 [Click to edit attribution]

License
<https://creativecommons.org/licenses/by/3.0/>

+ Add metadata field

Sequence Metadata

Canvas Metadata

Bulk Actions

EXHIBITION

Rise of a Campus

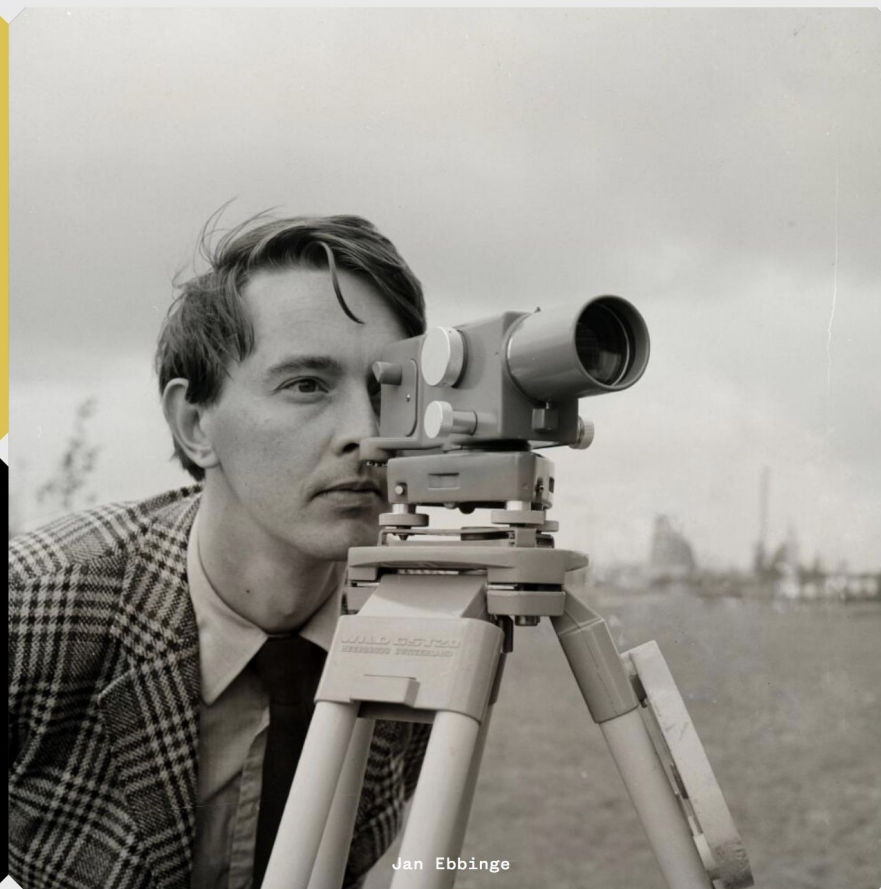
[View source on GitHub](#)



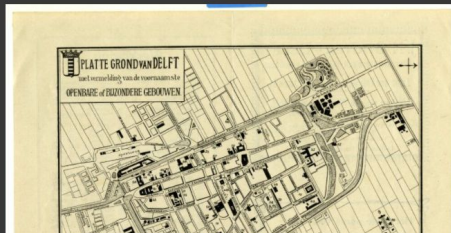
ABOUT

A campus is a living thing. It expands and shrinks. It follows the changing needs of the university. It can be perceived as lively yet it can be boring. In an ideal situation, knowledge garnered from the most exotic branches of research wafts through the air. Some see the campus as the epitome of the grandeur of a university, others see it as an industrial area. Just like any other neighbourhood, it has a distinct style and atmosphere.

[Read More](#)



Jan Ebbinge



Around 1900

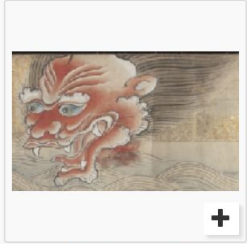
Series of maps depicting the university's growth after 1900.

Stadsarchief Delft / TU Delft
Library, Special Collections

[TU Delft, Exhibition "Rise of a Campus"](#)

Combinaison Manifestes IIF + markdown + générateur de sites

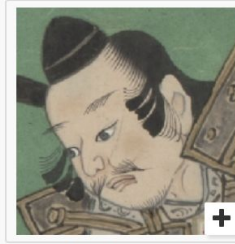
酒呑童子 : 178 images



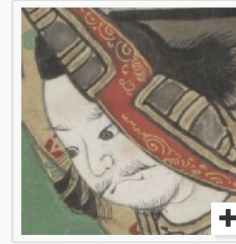
iiif.lib.keio.ac.jp



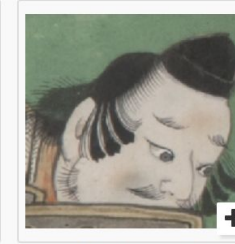
iiif.lib.keio.ac.jp



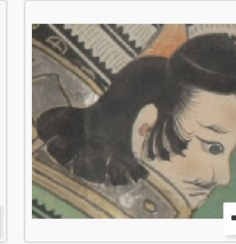
iiif.lib.keio.ac.jp



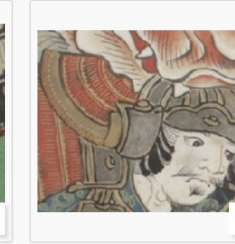
iiif.lib.keio.ac.jp



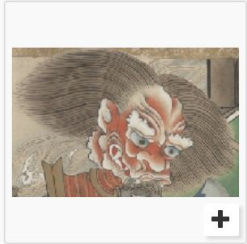
iiif.lib.keio.ac.jp



iiif.lib.keio.ac.jp



iiif.lib.keio.ac.jp



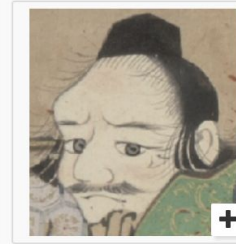
iiif.lib.keio.ac.jp



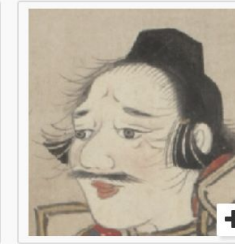
iiif.lib.keio.ac.jp



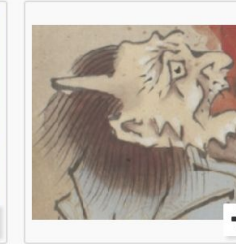
iiif.lib.keio.ac.jp



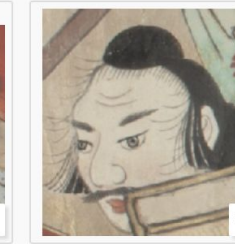
iiif.lib.keio.ac.jp



iiif.lib.keio.ac.jp



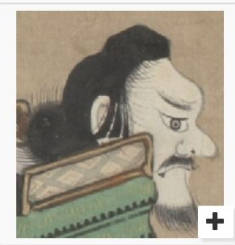
iiif.lib.keio.ac.jp



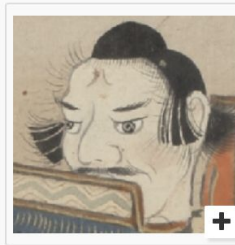
iiif.lib.keio.ac.jp



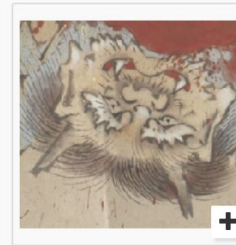
iiif.lib.keio.ac.jp



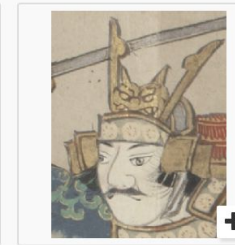
iiif.lib.keio.ac.jp



iiif.lib.keio.ac.jp



iiif.lib.keio.ac.jp



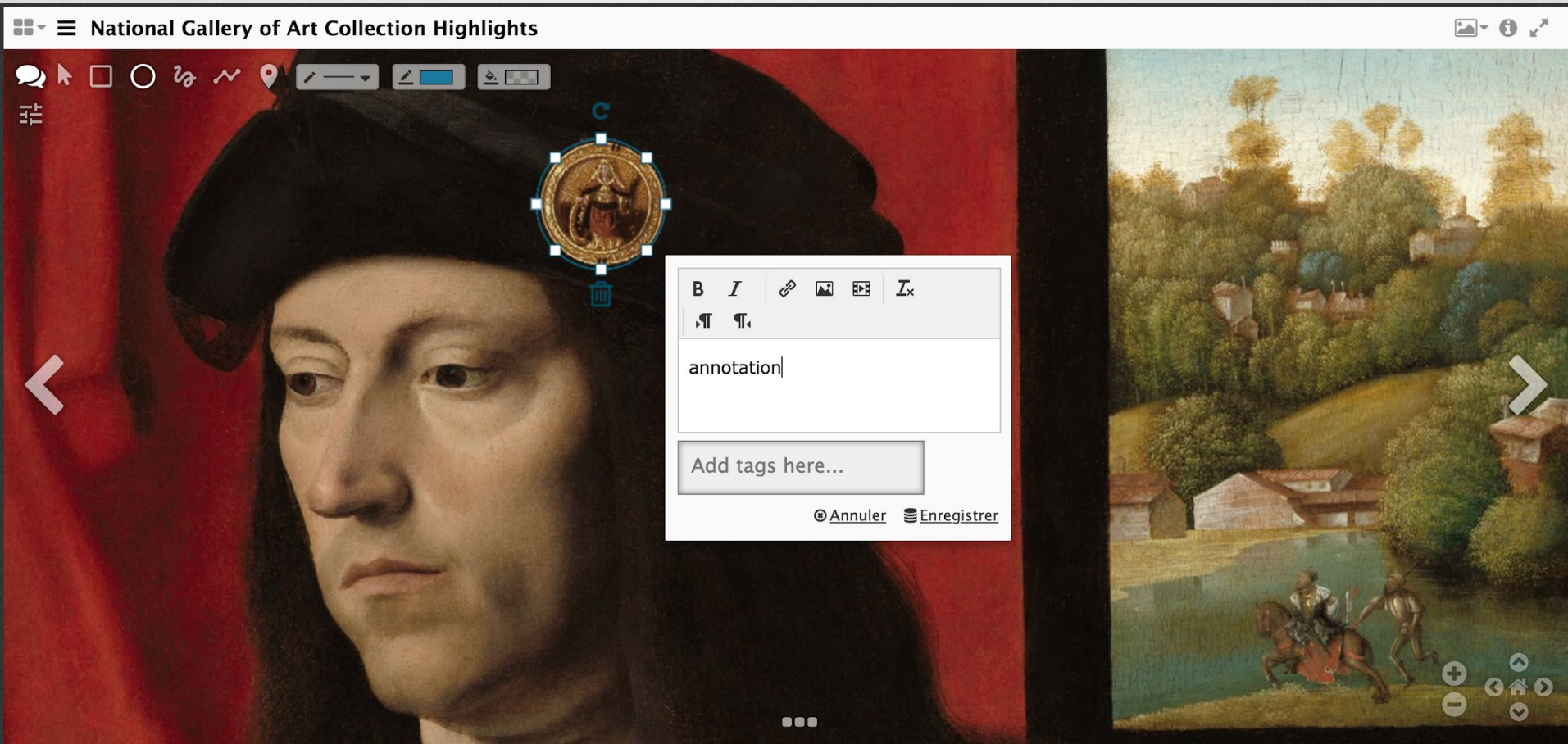
iiif.lib.keio.ac.jp



iiif.lib.keio.ac.jp

Collection of Facial Expressions : 酒呑童子 (“buveur de saké”)

Annoter



Outil d'annotation embarqué dans Mirador (v2)
(image NGA Washington)



en Edit Delete

Virginia Clauß, a114:

Battle & Submission – Japanese Ships

A warrior (Empress Jingū? Sumiyoshi?) stands on the fore of the first, better equipped Japanese ship, holding the jewel. A large part of the ship is taken up by two cabin structures, of which one resembles a two-story pagoda. The second ship is rather crowded with warriors, who are already engaged in the battle against the



Annotations dans Mirador 2

Hachiman Digital Handscrolls - [Universität Heidelberg](https://www.uni-heidelberg.de)

1A/23



Person

A crowd-source group for a person

Name

Name for this person

Date of Birth

Date of Birth of the person identified.

Occupation

Job title or occupation for the person identified

Identification de personnes (projet de crowdsourcing - [d mo vid o](#))

Gwilym Livingstone Evans - National Library of Wales



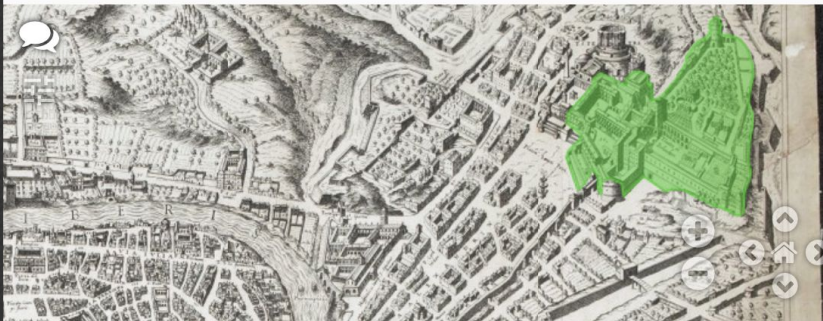
ACCADEMIA

Vatican (Apostolic) Palace

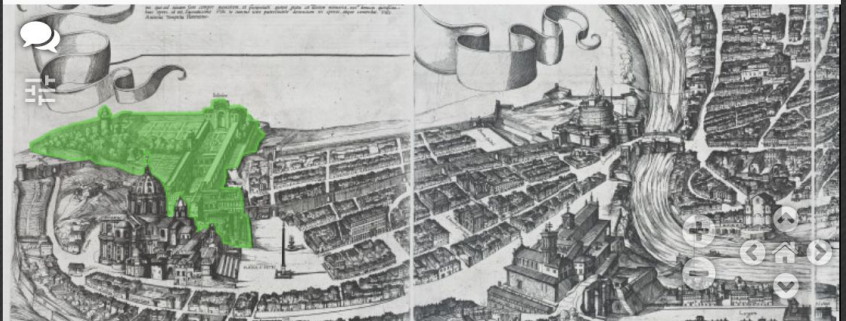
DOCUMENTS | MAPS

↗ Full Screen

Étienne Dupérac, Nova Urbis Romae ...



Antonio Tempesta, Pianta di Roma, 1...



Giovanni Maggi and Paul Maupin, Dis...

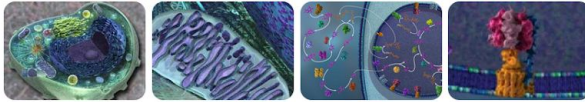


Giovanni Battista Falda, Nuova pianta...



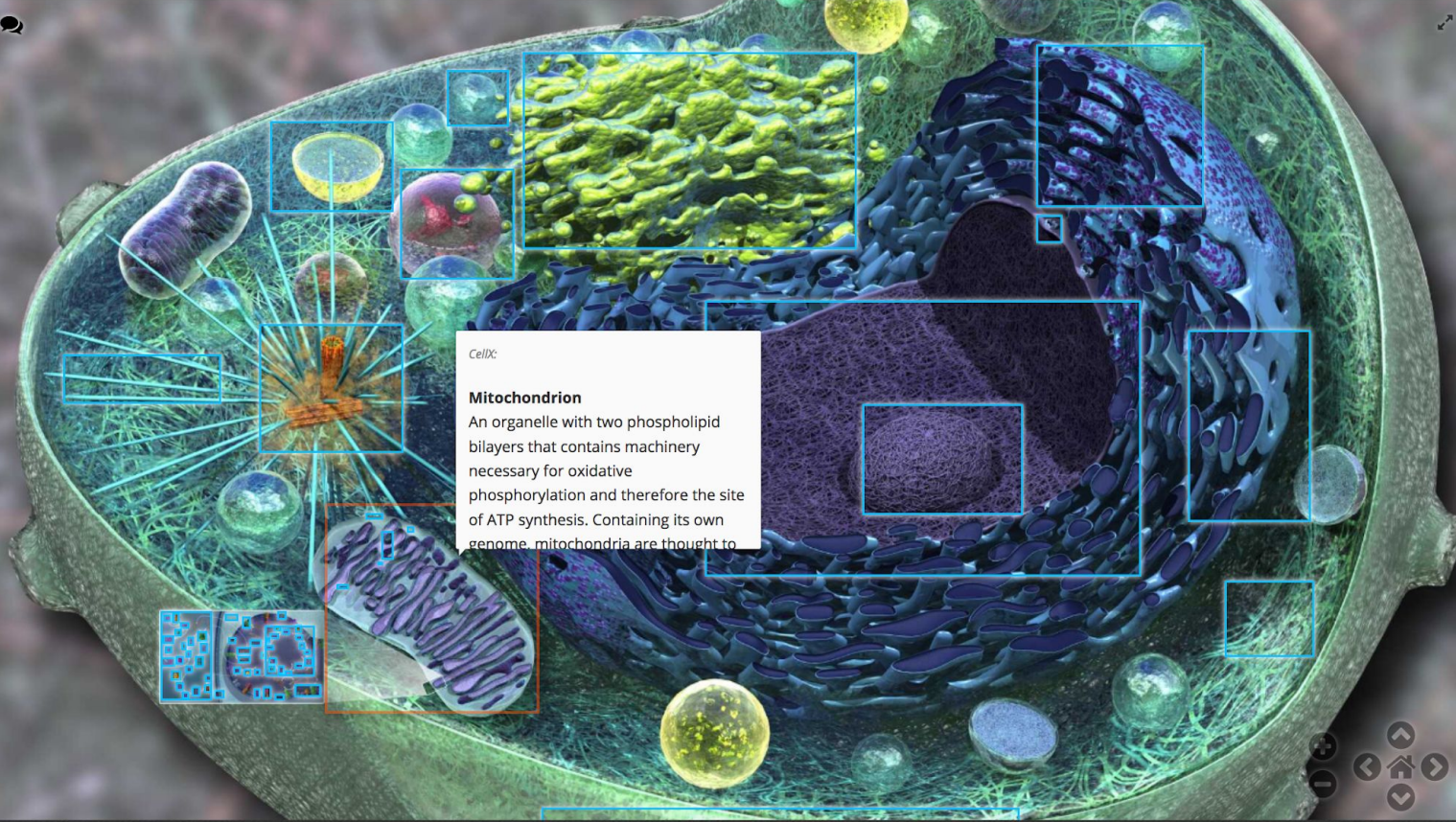
Identification de lieux

The History of the Accademia di San Luca, c. 1590–1635: Documents from the Archivio di Stato di Roma - [National Gallery of Art, Washington](#)



Hide Annotation List

CellXplorer (eukaryotic and prokaryotic cells)



CellX

Mitochondrion
An organelle with two phospholipid bilayers that contains machinery necessary for oxidative phosphorylation and therefore the site of ATP synthesis. Containing its own genome, mitochondria are thought to

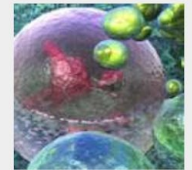
Goigi Complex

Stacked membranous structure responsible for sorting and packaging of lipids and proteins before secretion or compartmentalization.



Vesicle

Small transport packages enclosed by lipid-bilayers that contain materials to be transported between different parts of the cell.



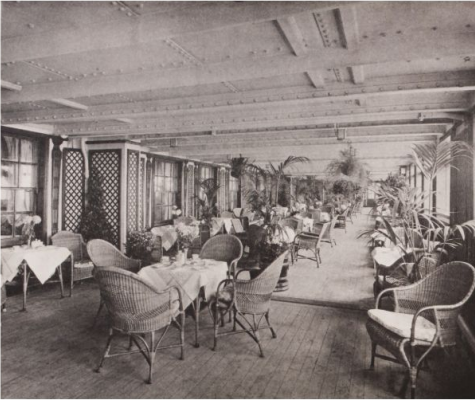
Peroxisome

A small organelle that degrades fatty acids and amino acids through reactions that produce hydrogen peroxide. Hydrogen peroxide is converted to water and oxygen by the enzyme catalase.

Hide Annotation

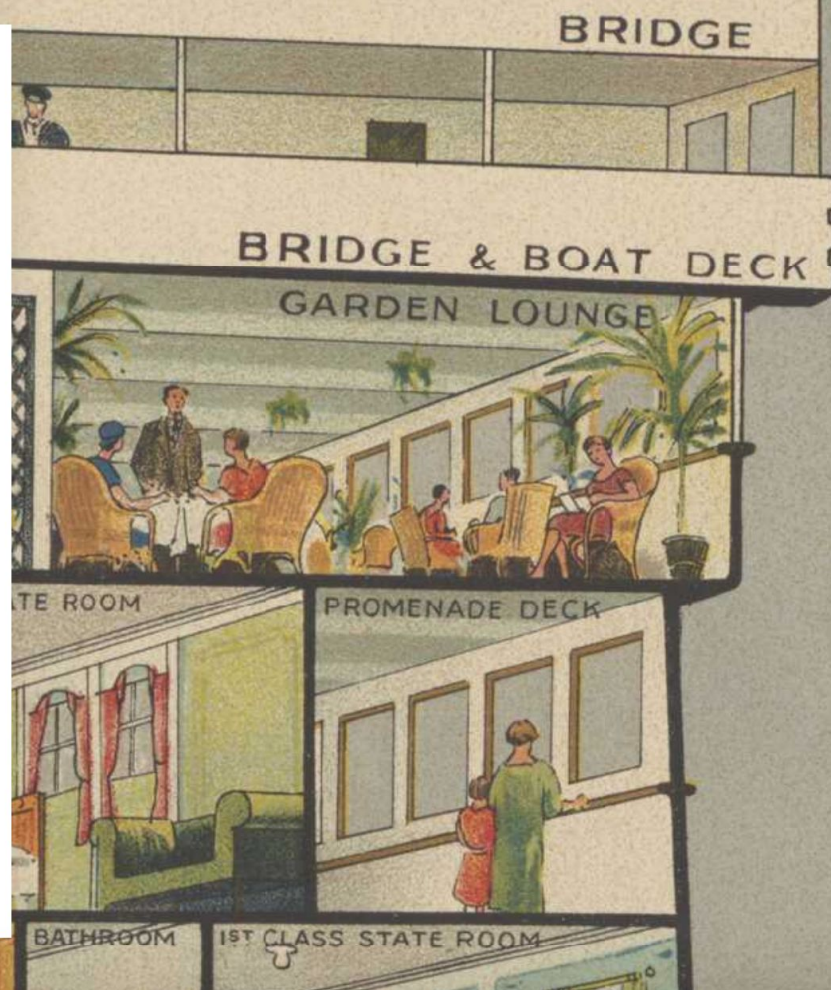
Annotation à vocation pédagogique
Cell Biology: Mitochondria - CellXplorer (HarvardX)

Garden lounge



“As cool, as restful, as any terrace overlooking a rose-garden.” (*The New Art of Going Abroad*, 1929). Overlooking the sea and decorated with palms, the garden lounge was a fashionable place to have tea and was sometimes used for dancing.

Photograph from *The New Art of Going Abroad*, 1929, US. National Art Library: 38041986015030. © Victoria and Albert Museum, London



Proposer un parcours commenté et illustré au sein d'une image

Démo V&A "Ocean Liners" <https://canvas-panel.netlify.com/#/examples/fullpage>

V&A, [Inside an ocean liner: the 'Aquitania'](#)

سراغيرة لهايتن الفرتين فاضب بيدك المامعوف الفرتين واحذر واضرب



The manuscript's fine watercolour illustrations pay close attention to the details of the riders' clothing and weaponry. The equivalent of a Christian knight was a 'Faris' (related to 'faras': horse). Famously, they fought without the heavy armour worn by Crusader knights: relying instead on the speed, skill and rapid attacks they could make while unencumbered.



Proposer un parcours commenté et illustré au sein d'une image

[Experiments in digital storytelling using IIIF, CogApp](#)

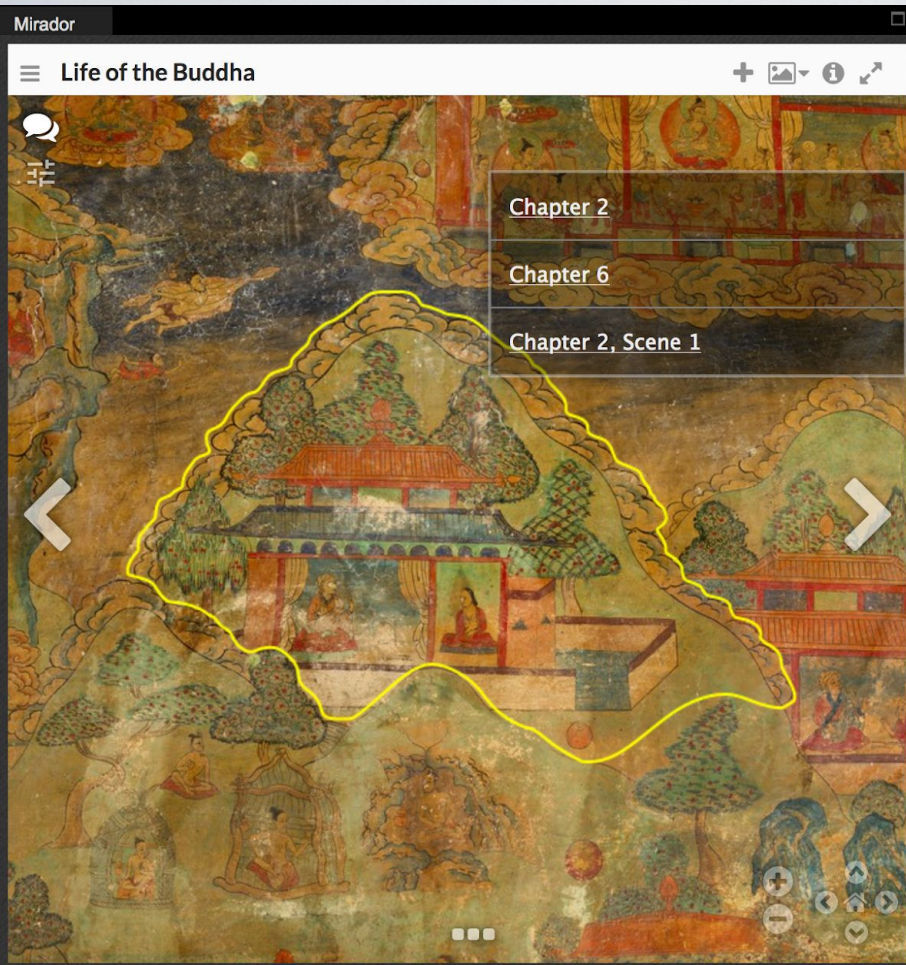


All gorillas have a **prognathic** face, meaning their lower jaw extends outwards.



Proposer un parcours commenté au sein d'un objet 3D

[The Western Lowlands Gorilla](#) - University of St Andrews Library



Annotations x

Sun of Faith English

2.1

Chapter 2. The Advent of an Extraordinary Lineage

At that time there was a city named Kapilavastu on the banks of the River Ganga, Bhagirathi, the "Chariot of the Fortunate."

King Simhahanu, descendant of a line of universal monarchs and member of the Shakya clan, reigned over Kapilavastu. Simhahanu had four sons named Shuddhodana, Shuklodana, Dronodana, and Amrtodana. He also had four daughters named Shuddha, Shukla, Drona, and Amrita. The Shakya king Suprabuddha reigned over the Shakya town Devadaha.

Under these two rulers, the kingdoms were happy and prosperous according to dharma. So did they maintain their kingdoms.

Simhahanu made a wish, "Would it not be fitting if, among my descendents, a universal ruler were to appear?"

Suprabuddha then wished to align himself with Simhahanu.

Annotations x

Sun of Faith Tibetan

Panel 1

1

1.1

དེ་ལས་དང་པོ་དགའ་ལྷན་དུ་ལྷའི་བྱ་དམ་པ་ཏོག་དགའ་པོར་གྱུར་པའི་རྒྱལ་ལོ་

དེ་ཡང་ཕྱོགས་སྐྱེ་དགུ་རྣམས་ཀྱི་ཚེ་ལོ་ཉི་ལྷི་ཐུབ་པའི་དུས་ལ། བཙེམ་ལྷན་འདས་འོད་སྲུངས་འཇིགས་རྟེན་དུ་བྱོན།

དེའི་དུས་ཀ་ལོ་སྐོལ་གྱི་ཕྱོག་པ་འདི་བམ་ཟེའི་ཁྱེའུ་སྐྱམ་ཞེས་བྱ་བར་གྱུར།

དེ་ནས་འཕྲོས་ཏེ་དགའ་ལྷན་གྱི་ལྷ་རྣམས་ཀྱི་སྟོན་པ་བྱུང་རྒྱལ་སེམས་དཔའ་དམ་པ་ཏོག་དགའ་པོ་ཞེས་བྱ་བར་གྱུར་ཏེ།

སྐྱེ་བ་གཅིག་གིས་ཐོགས་པའི་བྱང་རྒྱལ་སེམས་དཔའའི་རྒྱལ་བཟུང་ནས། དགའ་ལྷན་ཀ་གནས་པ་རྣམས་གཙོ་ཚེར་གྱུར་པའི་ལྷ་ལ་སོགས་པའི་འགྲོ་བ་རྣམས་རབ་དུ་སྐྱོན་པའི་ཕྱིར། ཡང་དག་པའི་ཚེས་སྟོན་པར་མཛད་དོ།

དྲེ་ནས་བརྩམས་ཏེ་འཇོམ་བྱ་སྤྱིང་པ་རྣམས་ཚེ་ལོ་བརྒྱ་པ་ལ་གནས་པའི་བར་དུ་དགའ་ལྷན་གྱི་གནས་དེ་ཉིད་དུ་སྐྱེ་ལུས་ཀྱི་རྟེན་དེ་ལོ་ནས་

Transcription et traduction, mise en relation texte/image

[The Life of the Buddha](#) - University of Virginia

The Welsh Book of Remembrance 1928

- ▼ Royal Navy
 - Officers
 - Personnel
- ▶ Royal Flying Corps
- ▶ Royal Air Force
- ▶ Cavalry
- ▶ Royal Regiment of Artillery
- ▶ Corps of Royal Engineers
- ▶ Grenadier Guards
- Coldstream Guards
- Scots Guards
- ▶ Irish Guards
- ▶ Welsh Guards
- ▶ Guards Machine Gun Regiment

The image shows a digital archive interface for 'The Welsh Book of Remembrance 1928'. On the left is a navigation menu with categories like 'Royal Navy', 'Royal Flying Corps', etc. The main area displays a scanned page with a decorative header 'ROYAL NAVY' and a list of names. A pop-up window is open over the text, showing a transcription and tagging interface. The pop-up window contains the following text:

heading rank name place unit ship
 medal
 Ty.Sub.Lt Eric Hugh Allan Cardiff R.N.R Bombala

At the bottom of the pop-up window are 'Cancel' and 'Save' buttons. Below the main image is a row of thumbnails representing different pages in the book, with the current page highlighted.

Transcription et étiquetage textuel (projet de crowdsourcing)

[The Welsh Book of Remembrance](#) - National Library of Wales

Simple IIIF Interactive Transcript - BBC TextAV

Get Random Manifest

<https://tomcrane.github.io/bbctextav/iiif/ID193605600.json>

Parse Manifest

View Manifest

07.06.2018: Aktuelle Stunde zu den Auswirkungen der Datenschutz-Grundverordnung



00:40 - 00:43

Die Ängste der Menschen sind real.

00:43 - 00:48

In Anbetracht des deutschen Abmahnunwesens sind sie auch realistisch.

00:48 - 00:51

Vor zwei Wochen war sogar in der „Zeit“ zu lesen,

00:51 - 00:53

dass es der deutschen Mittelschicht längst nicht so gut geht,

00:53 - 00:55

wie hier immer behauptet wurde.

00:55 - 00:57

Viele Menschen befürchten den sozialen Abstieg,

Transcription vidéo

[Simple IIIF Interactive Transcript - BBC TextAV](https://tomcrane.github.io/bbctextav/iiif/ID193605600.json)

*Rechercher, au sein d'un
document*

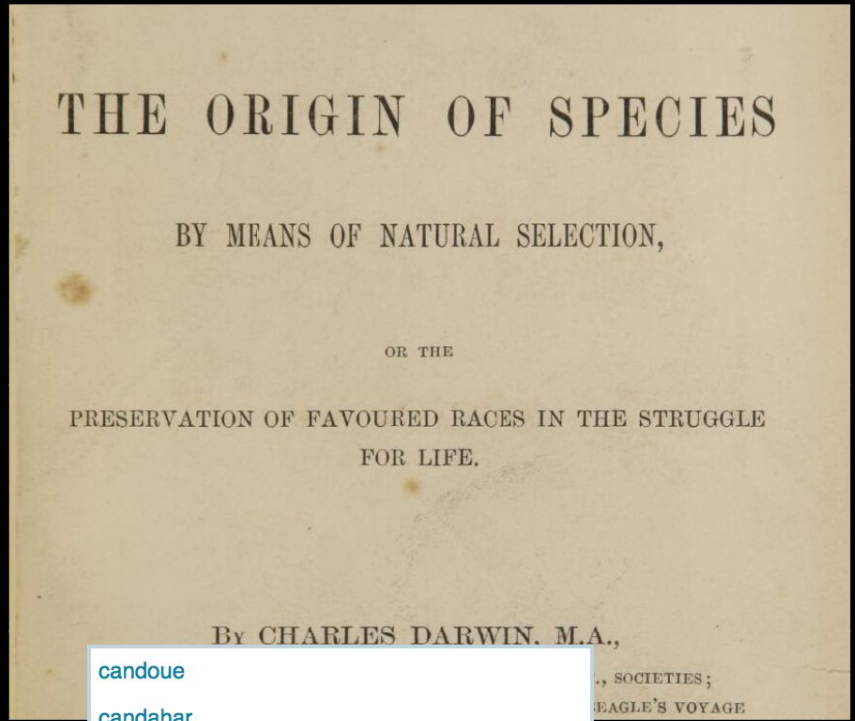
(OCR, autres annotations...)

CONTENTS << >>

On the origin of species by means of natural selection , or, The...

<< MORE INFORMATION >>

Index Images



candoue
candahar
candolle
candolles
cand

page - of 502

Search within this item:

Download options Add to bookmarks Embed Full screen

Résultats de recherche plein-texte dans l'OCR d'un livre, dans *Universal Viewer*

Wellcome Library - <https://wellcomelibrary.org/item/b1802922x>

CONTENTS << >>

Index Images



On the origin of species by means of natural selection , or, The...

seeds of about 100 plants of a herb, after dried, could be floated across a space of several miles in width, and would then germinate. The smaller seeds often floating longer than the larger fruits often floating longer than the smaller seeds; as plants with large seeds or fruits hardly be transported by any other means. de Candolle has shown that such plants germinate in restricted ranges. But seeds may be occasionally transported in this manner. Drift timber is thrown up on the shore even on those in the midst of the widest of the Pacific the natives

MORE INFORMATION <<

Page 360
1 instance of 'candolle' found

page 360 of 502

Previous result 9 results found for 'candolle' Clear Next result

Download options Add to bookmarks Embed Full screen

Résultats de recherche plein-texte dans l'OCR d'un livre, dans *Universal Viewer*

Wellcome Library - <https://wellcomelibrary.org/item/b1802922x>

Authentication, autorisation

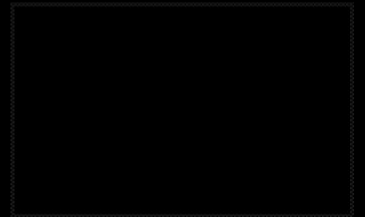


Please Log In

Example Institution requires that you log in with your example account to view this content.

Login

Cancel





Index Images

- Letter
- Letter
- Letter
- Letter
- Letter

CLOSE X

Archival material less than 100 years old

This digitised archival material is free to access. By accepting Wellcome Library's terms and conditions, you agree to the following:

By viewing this and any subsequent archive material under 100 years old, I agree that I will use personal data on living persons for research purposes only. I will not use personal data to support decisions about the person who is the subject of the data, or in a way that causes substantial damage or distress to them.

[Read Full Terms and Conditions](#)

Accept Terms and Open

*Vision par ordinateur,
“machine learning”*

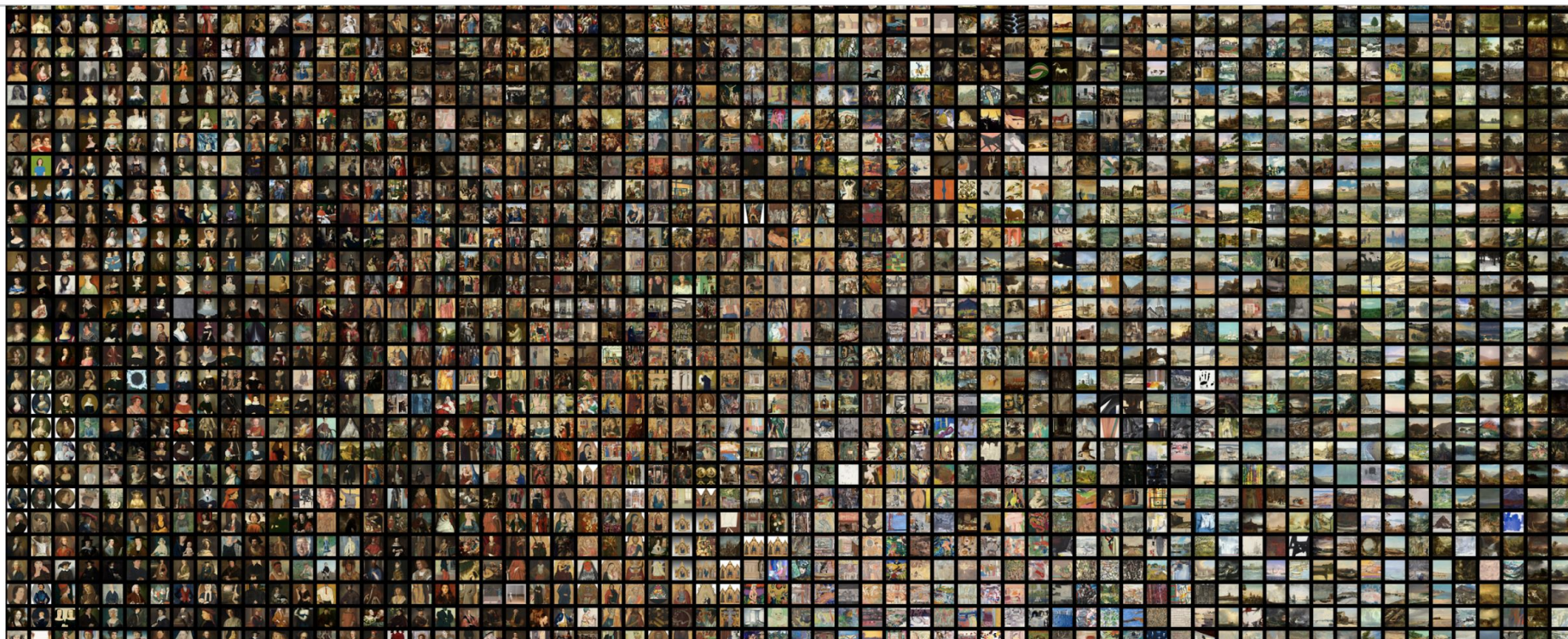


Global Currents (Stanford University)



Viewing the National Gallery's "collection of collections" with machines


At the National Gallery of Art Datathon, our team wanted to use the images of the artworks themselves as data, in concert with the curatorial metadata that the Gallery had provided us. Using our [computer vision pipeline](#), we were able to create gridded visualizations of selections of artwork images that arranged similar images closer to one another. It's worth taking a moment to understand how the visual similarity derived by Inception-v3 tracks with the formal qualities we'd usually associate with in art history, and how it operates differently.



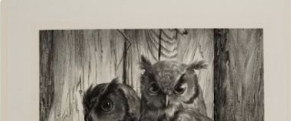
National Neighbours (NGA, Washington)

Search results for 'owl'


Results displayed in order of confidence determined by AI




Clarifai	99.1%
Google	98%
Google	87.7%
Amazon	85.2%
Microsoft	82.9%
Google	50.2%
Google	99.4%




Amazon	94.3%
Microsoft	92.3%
Google	84.6%
Google	68.4%
Google	67.5%
Google	99.2%




Microsoft	76.4%
Google	99.1%




Amazon	77.1%
Google	73%
Microsoft	60.5%
Imagga	55.4%
Google	53.8%
Google	98.5%



Google	80.3%
Amazon	73.8%
Google	58.6%
Google	57%
Google	98.1%




Amazon	92.9%
Google	74.8%
Google	96.3%




Google	95%
---------------	------------



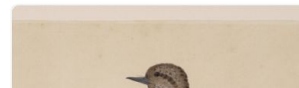
Microsoft	89.6%
-----------	-------



Microsoft	68.9%
Amazon	66.5%
Google	89.1%



Imagga	24.8%
Clarifai	88.5%



[AI Explorer](#), Harvard Art Museums

Divertissement :)



Puzzles!

Michael Appleby - <http://puzzle.mikeapps.me>



ANTLITZ.NINJA

Leander Seige - <https://antlitz.ninja>

Les spécifications IIIF



Une **communauté**,

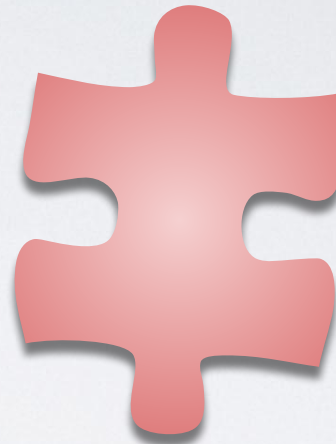
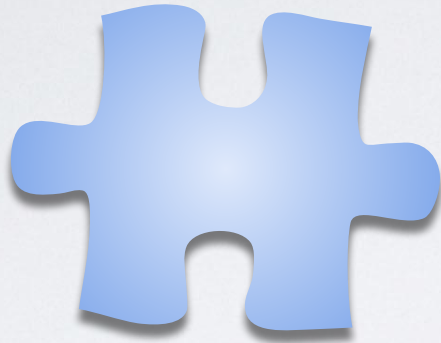
... qui développe des **APIs partagées**,

... les implémente dans des **logiciels**,

... expose des **contenus** interopérables sur le Web

Les 4 APIs de IIF (versions stables)

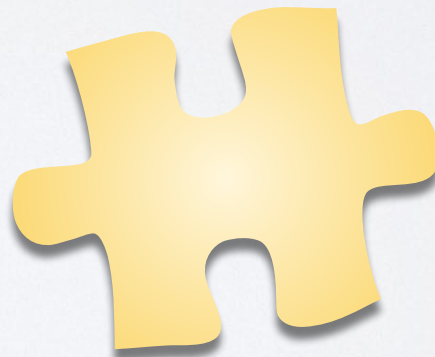
API Image



API Presentation



API
“Content Search”



API
Authentication

+ 2 APIs en développement (draft)



API
“Change Discovery”

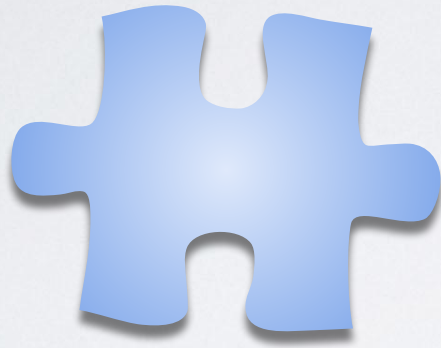


API
“Content State”

Les spécifications IIIF

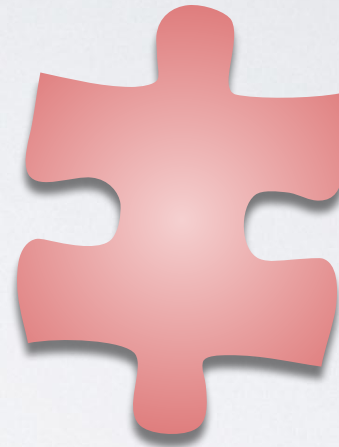
*Les 2 APIs principales :
Image et Presentation*

Les 2 APIs principales



API Image

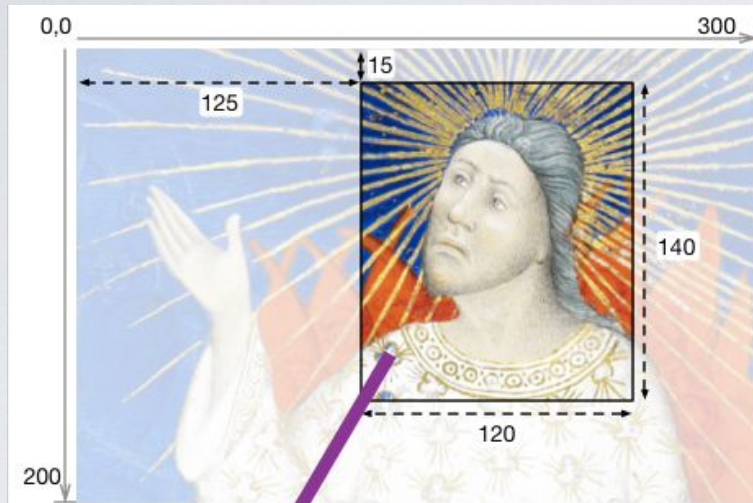
Service web pour manipuler une image à travers une URL
(pour “obtenir des pixels”)



Presentation API

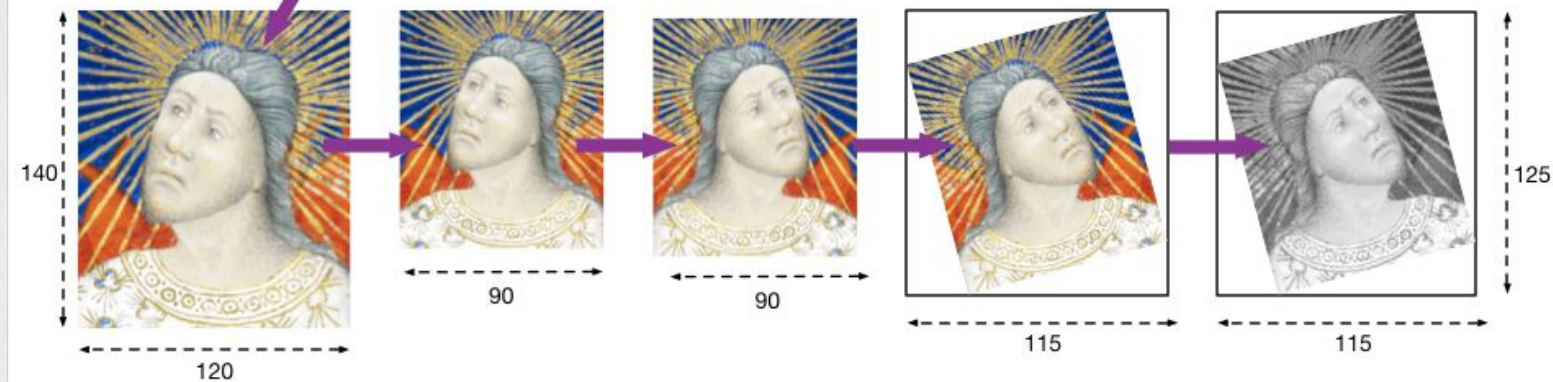
Juste assez de métadonnées nécessaires à la présentation d’un objet numérique

API Image - paramètres d'URL



<http://iiif.io/api/image/>

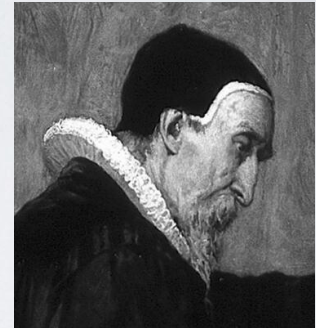
CC-BY IIIF Consortium and Community



Syntaxe d'URL pour manipuler une image :

`https://example.com/{id}/{region}/{size}/{rotation}/{quality}.{fmt}`

API Image - Exemple



API Image demo (by Tom Crane) :

<https://tomcrane.github.io/the-long-iiif/image-api.html>

*John Dee performing an experiment before Queen Elizabeth I. Oil painting by Henry Gillard Glindoni
(Wellcome Library <https://wellcomelibrary.org/item/b14658197>)*

Region d'image

(coordonnées xywh, en pixels ou %)

Scheme: <https>

Server: gallica.bnf.fr

Prefixe: /iiif

Identifier: [ark:/12148/btv1b10500687r/f52](https://nbn-resolving.org/urn:nbn:fr:ark:/12148/btv1b10500687r/f52)

Region: **1651,1704,1610,1604** (xywh)

Size: full

Rotation: 0

Quality: default

Format: jpg



width 800 pixels (w,)



<https://gallica.bnf.fr/iiif/ark:/12148/btv1b10500687r/f52/1651,1704,1610,1604/800,/0/default.jpg>

{ region } { size }

API Image - Outils de “découpe”

IIF Image Manipulation Tool

Crop and Re-size Images

Create custom images by cropping and re-sizing images for download or linking

Using the steps below, you can select all or a portion of an image, and either download it or create a persistent link to it.

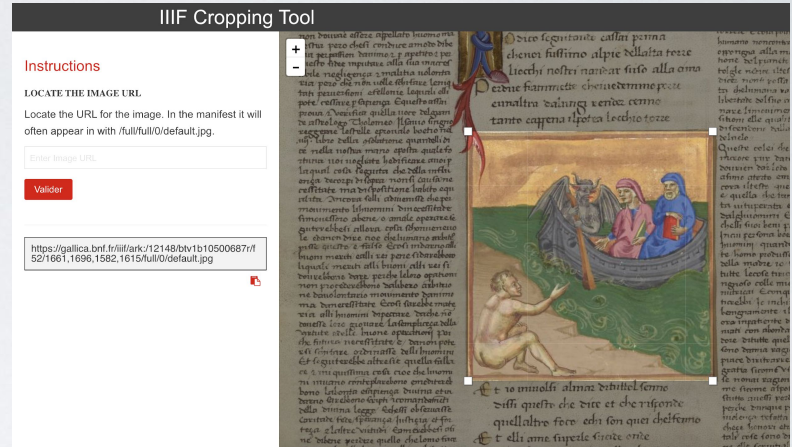
1: Select Image Area

Use the mouse (or a fingertip) to select all or a portion of an image in the Crop Box (or enter numbers in the coordinates boxes below).

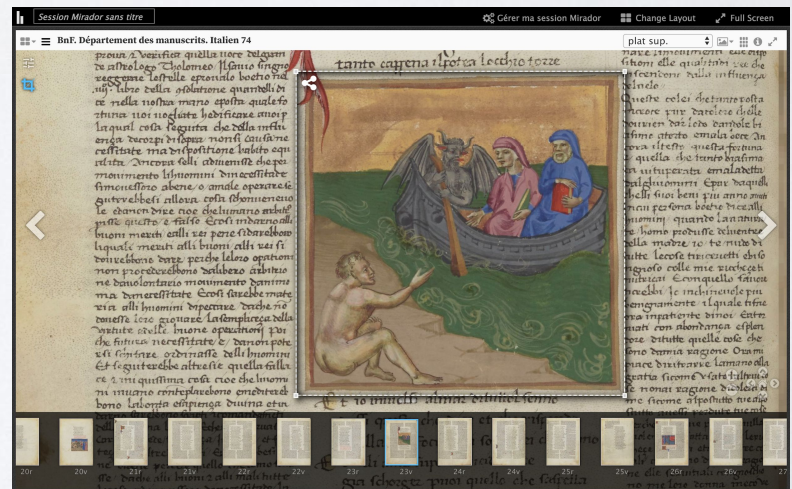
- You can also [select the entire image](#).



[IIF Image Manipulation Tool \(UCD\)](#)



[IIF Cropping Tool \(NCSU Libraries\)](#)



[Mirador Cropping Tool \(Biblissima\)](#)

API Image - Informations sur l'image

→ Métadonnées techniques sur l'image :

- ◆ dimensions de l'image
- ◆ tailles “préférées” du serveur
- ◆ dimensions des tuiles
- ◆ conformité : version de l'API, niveau de compatibilité, autres fonctionnalités supportées
- ◆ informations de droits et de licence

Modèle d'URI d'une requête d'information (info.json) :

{scheme}://{server}/{prefix}/{identifiant}/**info.json**

API Image - Information sur l'image

```
{
  "@context": "http://iiif.io/api/image/2/context.json",
  "@id": "http://www.example.org/image-service/abcd1234/1E34750D-38DB-4825-A38A-B60A345E59",
  "protocol": "http://iiif.io/api/image",
  "width": 6000,
  "height": 4000,
  "sizes": [
    {"width": 150, "height": 100},
    {"width": 600, "height": 400},
    {"width": 3000, "height": 2000}
  ],
  "tiles": [
    {"width": 512, "scaleFactors": [1,2,4,8,16]}
  ],
  "profile": [ "http://iiif.io/api/image/2/level2.json" ],
  "attribution": "Provided by Example Organization",
  "logo": "http://example.org/images/logo.png",
  "license": "http://rightsstatements.org/vocab/InC-EDU/1.0/"
}
```

Response to an image info request (JSON-LD)

Ex.: https://www.e-codices.ch/loris/bbb%2Fbbb-0218%2Fbbb-0218_098r.jp2/info.json

API Image - “exploreur de tuiles”

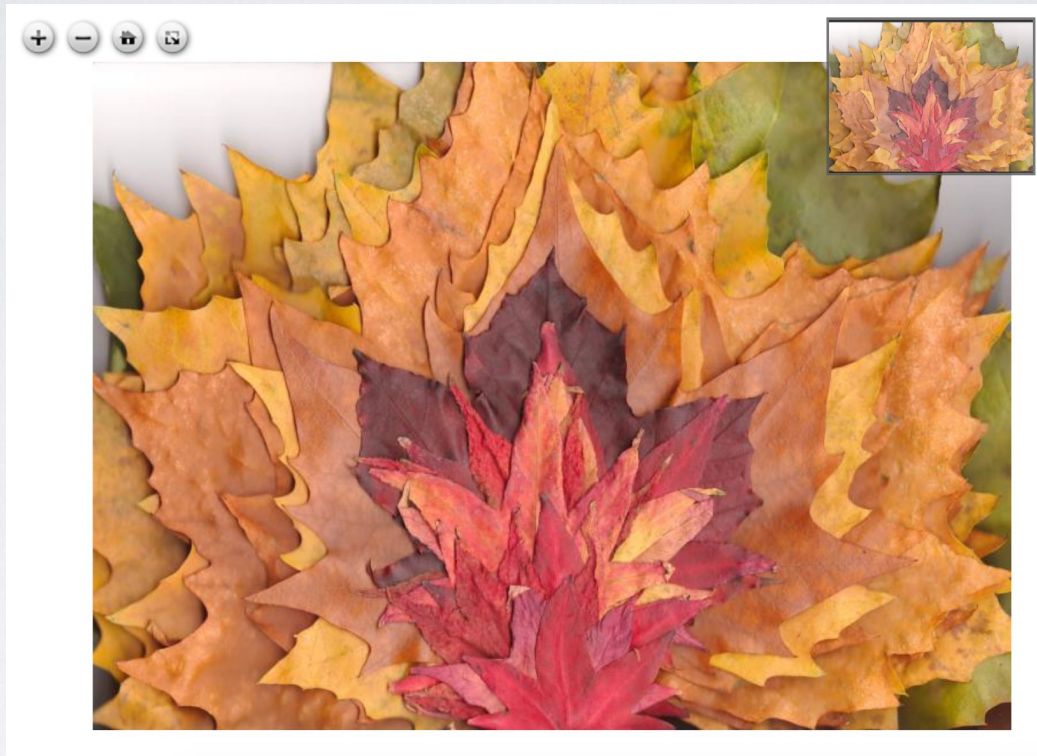


IIIF Tile Explorer (par Tom Crane) :

<http://tomcrane.github.io/presentations/tile-explorer.html>

(exemple [info.json](#))

API Image - implémentation de niveau 0



Tile-less IIF from legacy image pyramid (par Tom Crane) :

<https://tomcrane.github.io/scratch/osd/iiif-sizes.html>

API Image

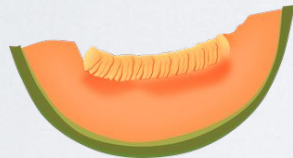
- Méthode standard pour appeler et délivrer des images :
 - ◆ interopérabilité entre les entrepôts d'images
 - ◆ standardise le zoom profond
 - ◆ socle commun de développement pour les applications côté client et côté serveur
- Citabilité des images et parties d'image

API Image - Implémentations

Serveurs d'images



IIPImage



Cantaloupe



Loris

Clients d'images (zoom)



OpenSeadragon

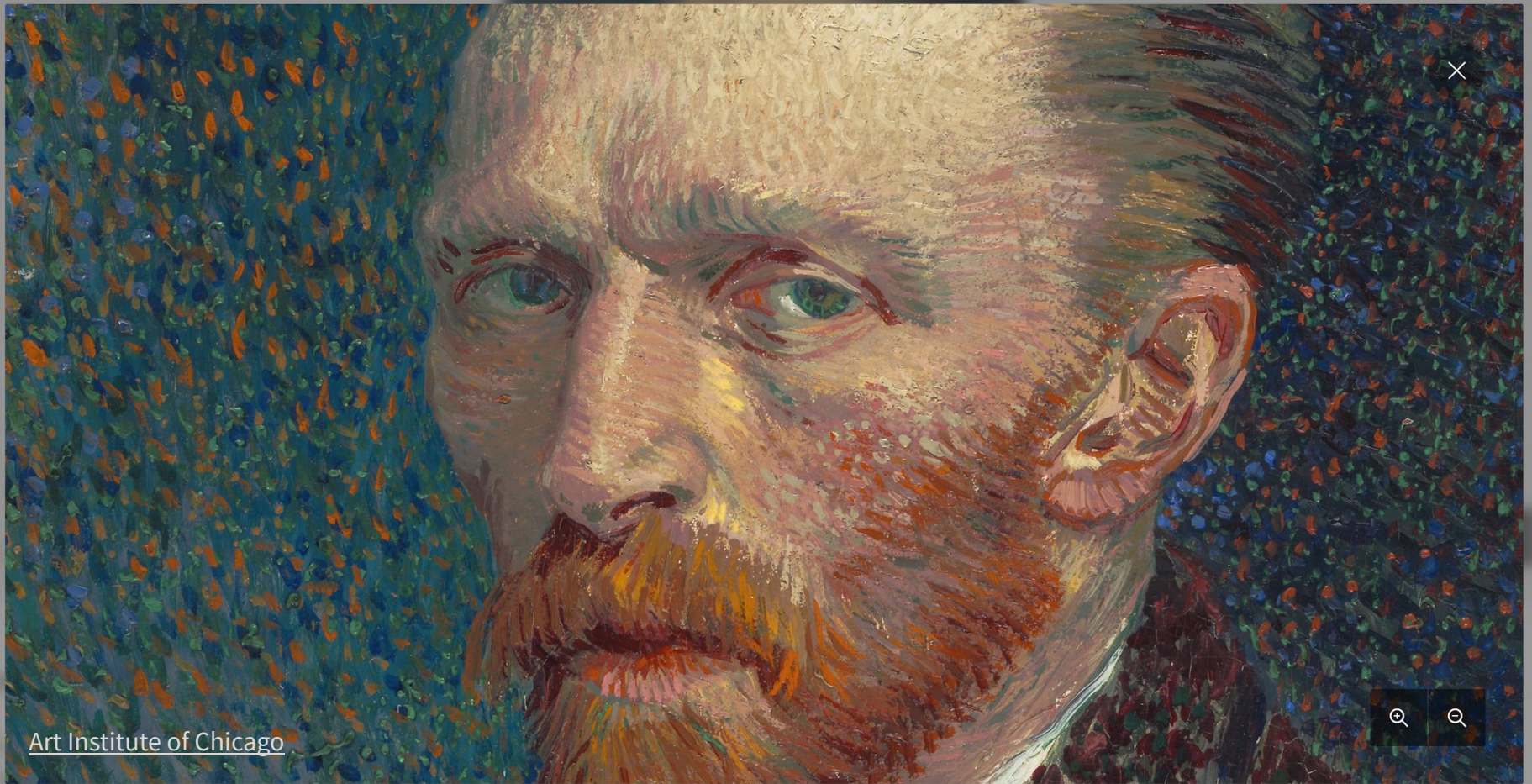


IIIF Cropping Tools

Et bien plus...

<https://github.com/IIIF/awesome-iiif/#image-servers>

<https://github.com/IIIF/awesome-iiif/#image-viewers>



Le zoom c'est bien, mais quid de : **Plusieurs images ?**

Structure / séquence ?

Contexte ? Métadonnées ?

API Presentation

Un Manifeste ?...

- Juste assez de **métadonnées** (descriptives / structurelles / techniques) **nécessaires à la présentation** d'un objet numérisé
- Définit la **sémantique de présentation** (et non de la description de l'objet)
- API basée sur un modèle destiné à présenter et à annoter la représentation numérique d'un objet physique
- Fichier JSON chargé par un visualiseur pour afficher un objet numérisé (format JSON-LD = *JSON for Linked Data*)

<http://iiif.io/api/presentation/>

- Index
- Table of contents
- Front matter
 - [Frontispiece]
 - [Title page]
- Preliminaries
 - [Epistle Dedicatory]
 - To the great Variety of Readers.
 - To the memory of my beloued, The Avthor Mr. William Shakespeare: And what he hath left vs.
 - To the Memorie of the deceafed Authour Maifter W. Shakespeare.
 - [Works and Names of Actors]
 - Vpon the Lines and Life of the Famous Scenicke Poet, Mafter William



About this item

CURRENT ITEM
fol. πA2r

RESOURCE
Bodleian Library Arch. G c.7
Mr. VWilliam Shakespeares comedies, histories, & tragedies.: Published according to the True Originall Copies.

Homepage
[View on Digital Bodleian](#)

Title
Mr. VWilliam Shakespeares comedies, histories, & tragedies.: Published according to the True Originall Copies.

Author
Digges, L.

Author
Heminge, John, approximately 1556-1630

Author
Jonson, Ben

Author

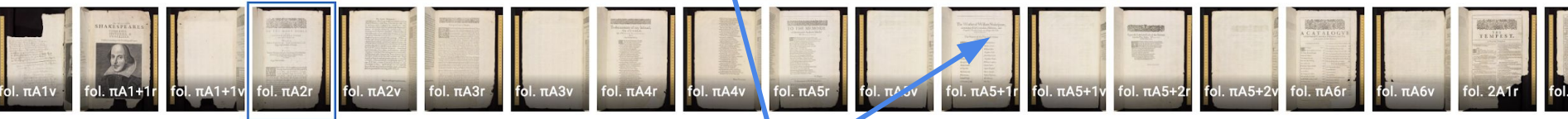


Image API

(requêtes d'images, zoom progressif)

Index

Table of contents

[Front matter]

[Frontispiece]

[Title page]

[Preliminaries]

[Epistle Dedicatory]

To the great Variety of Readers.

To the memory of my beloued, The Avthor Mr. William Shakespeare: And what he hath left vs.

To the Memorie of the deceafed Authour Maifter W. Shakespeare.

[Works and Names of Actors]

Vpon the Lines and Life of the Famous Scenicke Poet Mafter William

Structure (Ranges)

Métadonnées

Séquence

About this item

CURRENT ITEM

fol. πA2r

RESOURCE

Bodleian Library Arch. G c.7
Mr. VWilliam Shakespeares comedies, histories, & tragedies.: Published according to the True Originall Copies.

Homepage

[View on Digital Bodleian](#)

Title

Mr. VWilliam Shakespeares comedies, histories, & tragedies.: Published according to the True Originall Copies.

Author

Digges, L.

Author

Heminge, John, approximately 1556-1630

Author

Jonson, Ben

Author



TO THE MOST NOBLE AND INCOMPARABLE PAIRE OF BROTHERREN.

WILLIAM SHAKESPEARE, &c. Lord Chamberlaine to the Kings most Excellent Maiefty.

PHILIP EARLE of Montgomery, &c. Genteman of the Bed-Chamber. Both Knights of the most Noble Order of the Garter, and our singular good LORDS.

Right Honourable,

W Hith we studie to be thankfull in our particular, for the many fauours we haue receiued from your L.L. we are faine to mingle two the most diuerse things that can bee, feare, and rashnesse; rashnesse in the enterprize, and feare of the successe. For, when we view the places your H.H. fullaine, we cannot but know their dignity greater, then to descend to the reading of these trifles: and, while we name them trifles, we haue depriv'd our selues of the defence of our Dedication. But since your L.L. haue bene pleas'd to thinke that we haue done some thing, heere to



API Presentation

(métadonnées structurelles et techniques... pour l'affichage)

Métadonnées descriptives

(sans sémantique)

- Titre, auteur, date, etc.
- Informations d'attribution, droits, licence

Séquence(s)

- liste ordonnée de *Canevas*

Structure interne

- Table des matières, index, chapitrage audio/vidéo etc.

Manifeste IIIF



Annotations

- OCR, transcription, commentaires, tags, etc.

Métadonnées techniques

- sens et comportement de lecture ou feuilletage, format/taille/durée des contenus (image, audio, vidéo, etc.)

Liens externes

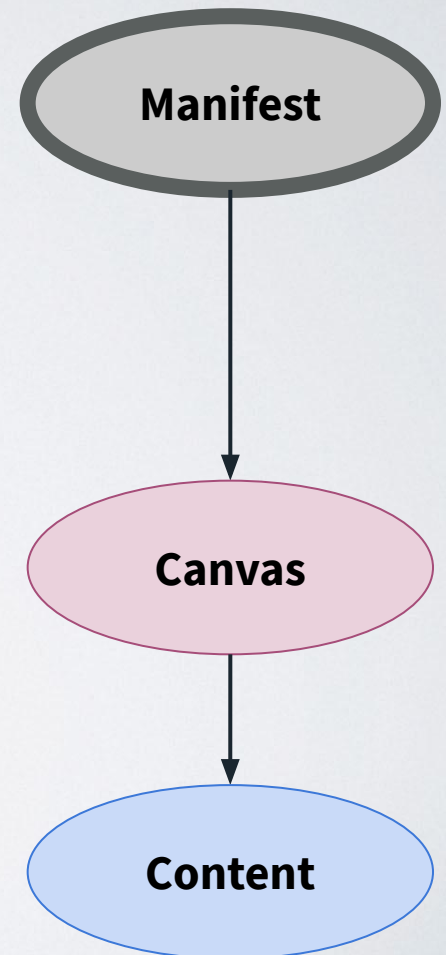
- pour les humains
- pour les machines (sémantique)

API Presentation - Anatomie d'un Manifeste

Manifeste pour chaque “chose” :

- Représente le plus souvent le fac-similé numérique d'un objet : livre, peinture, manuscrit, carte, partition etc.
- Un *Manifeste* contient toutes les métadonnées de présentation nécessaires à son rendu dans une interface
- Un *Manifeste* est constitué d'une séquence ordonnée de *Canevas* auquel on associe un ou plusieurs *Contenus*

Basic Resource Types

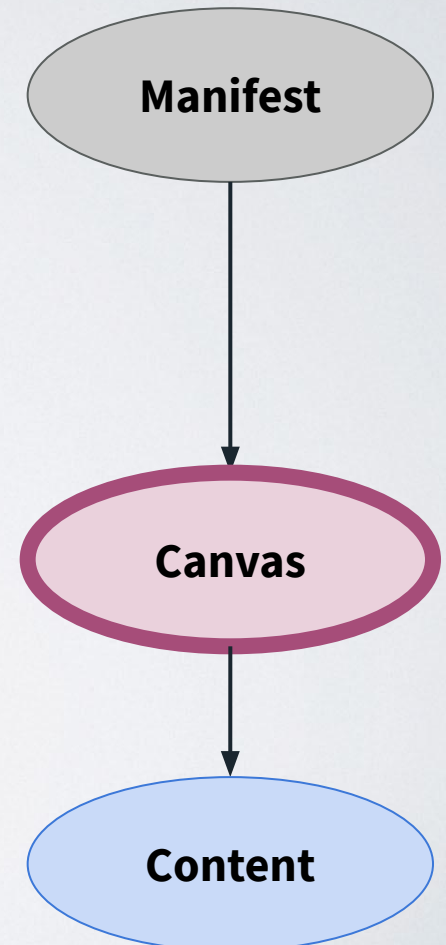


API Presentation - Anatomie d'un Manifeste

Un Canevas pour chaque “vue” :

- *Canevas* ≠ image
- un espace abstrait/vide sur lequel on “peint” du contenu (comme PowerPoint !)
- Un *Canevas* a une hauteur, une largeur, et un ratio d'aspect ratio qui permet de positionner précisément du *Contenu* dessus

Basic Resource Types

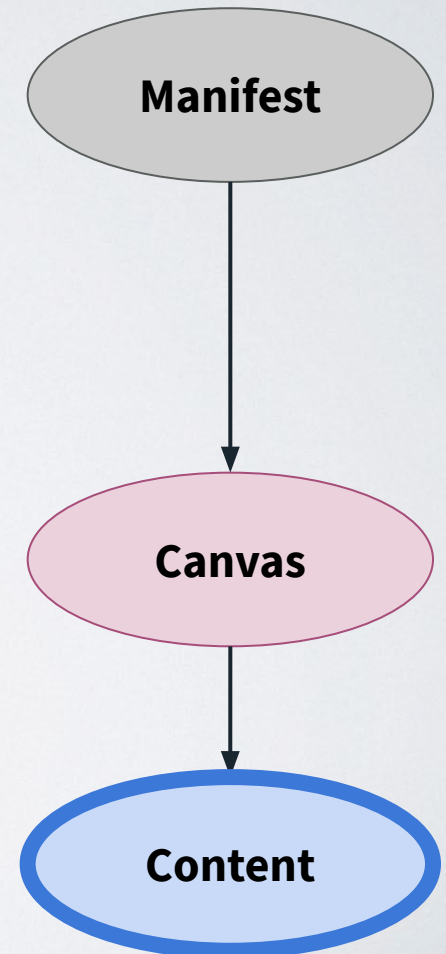


API Presentation - Anatomie d'un Manifeste

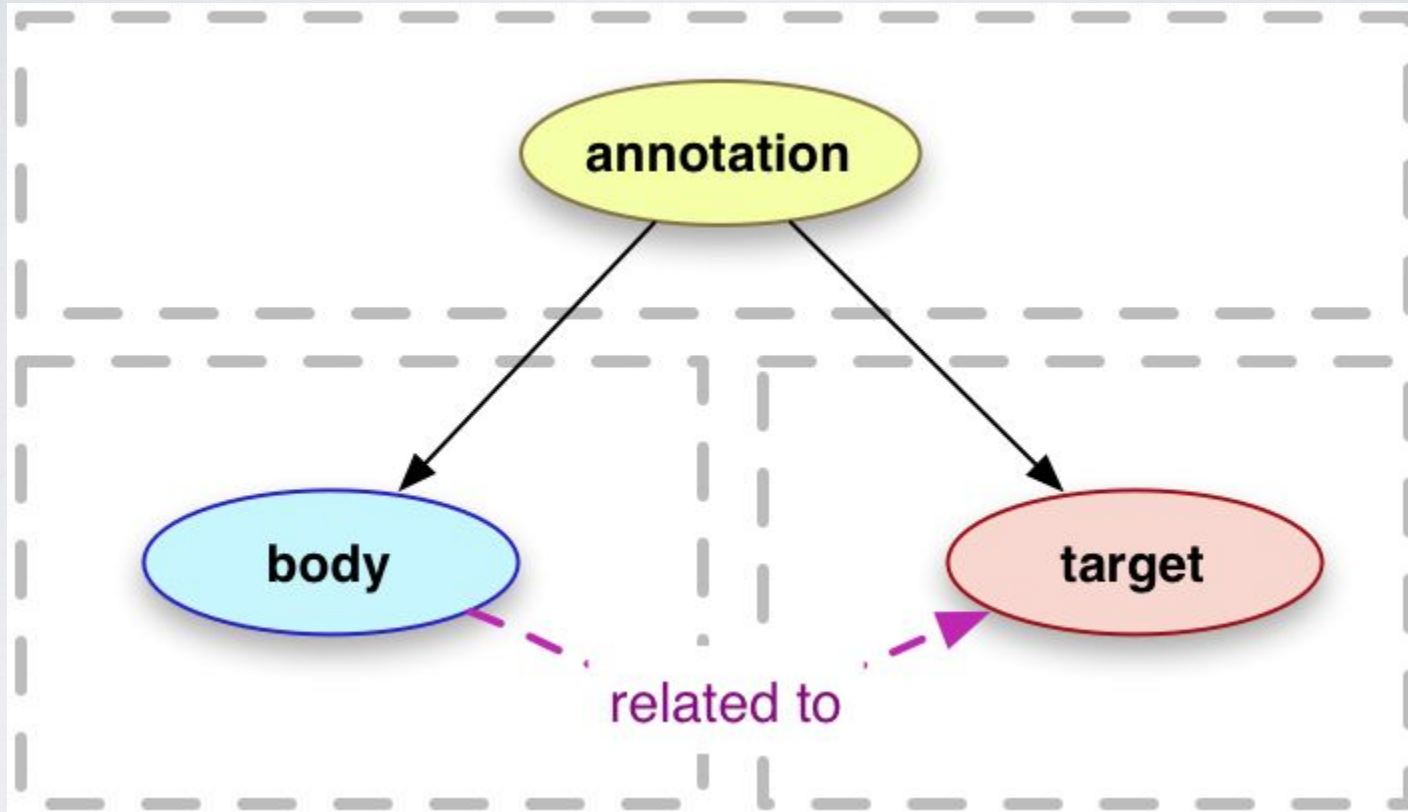
Un Contenu qui “*annote*” un Canevas :

- Le *Contenu* peut être une image, de l'audio, une vidéo, du texte, des liens vers d'autres ressources, etc.
- L'association d'un *Contenu* à un *Canevas* se fait via une *Annotation*

Basic Resource Types



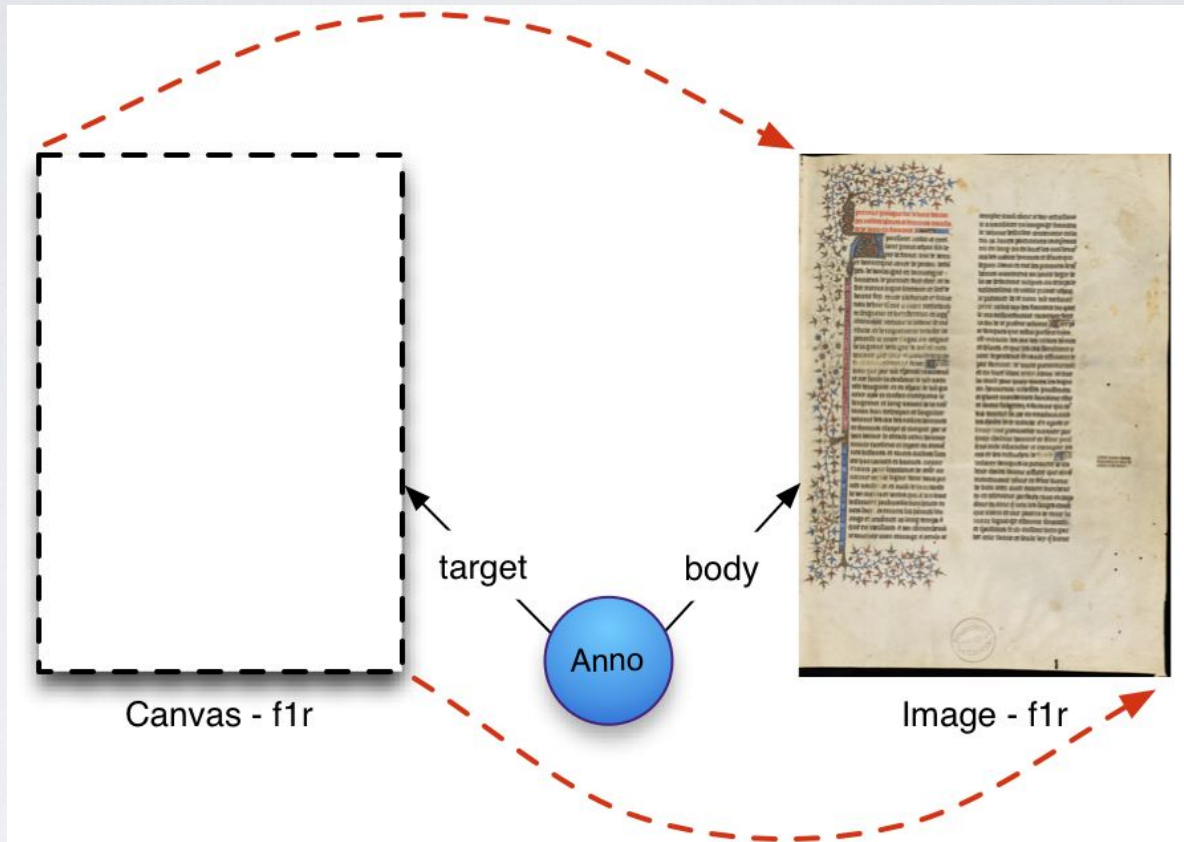
API Presentation / Web Annotation



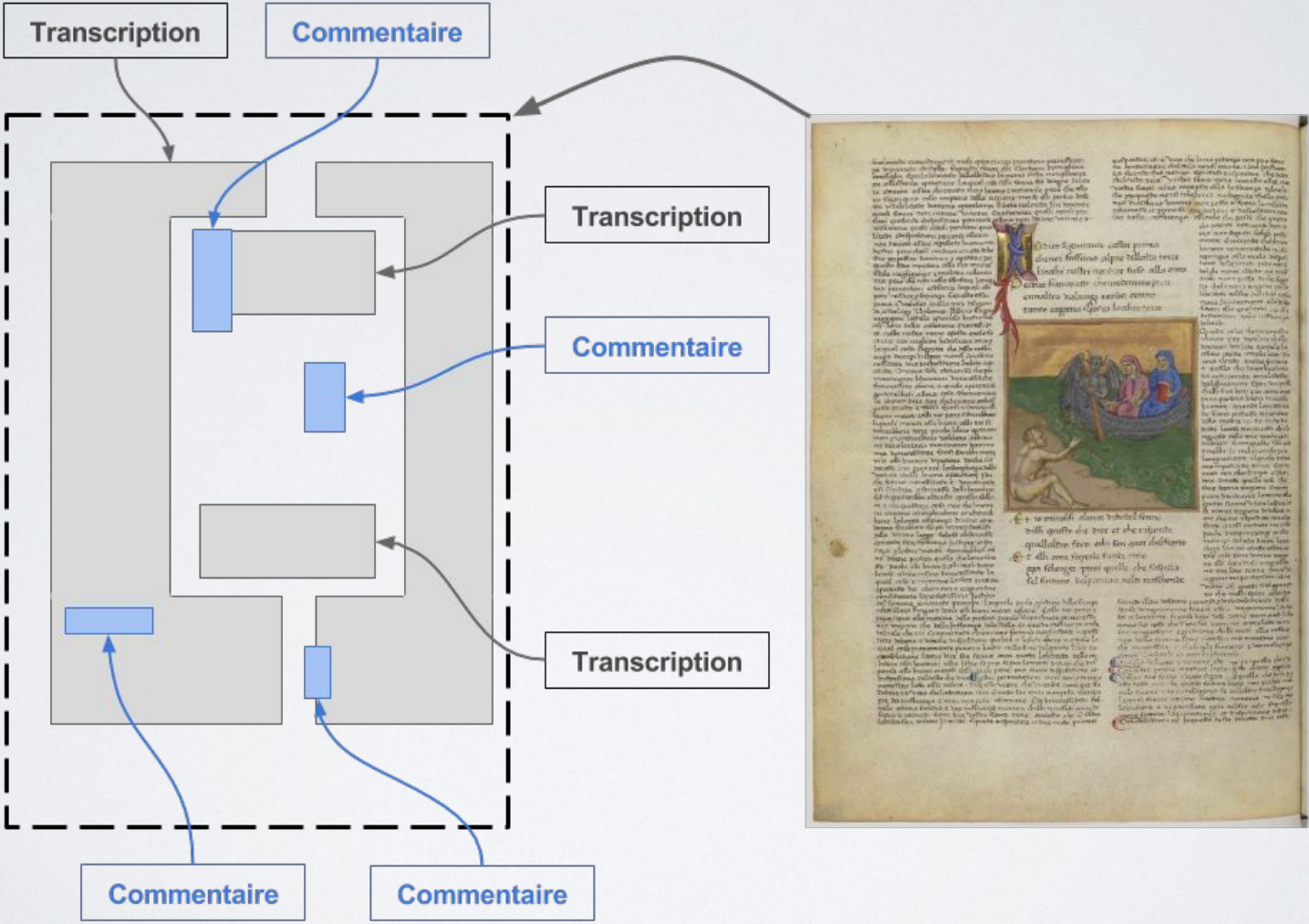
Copyright © 2017 W3C®

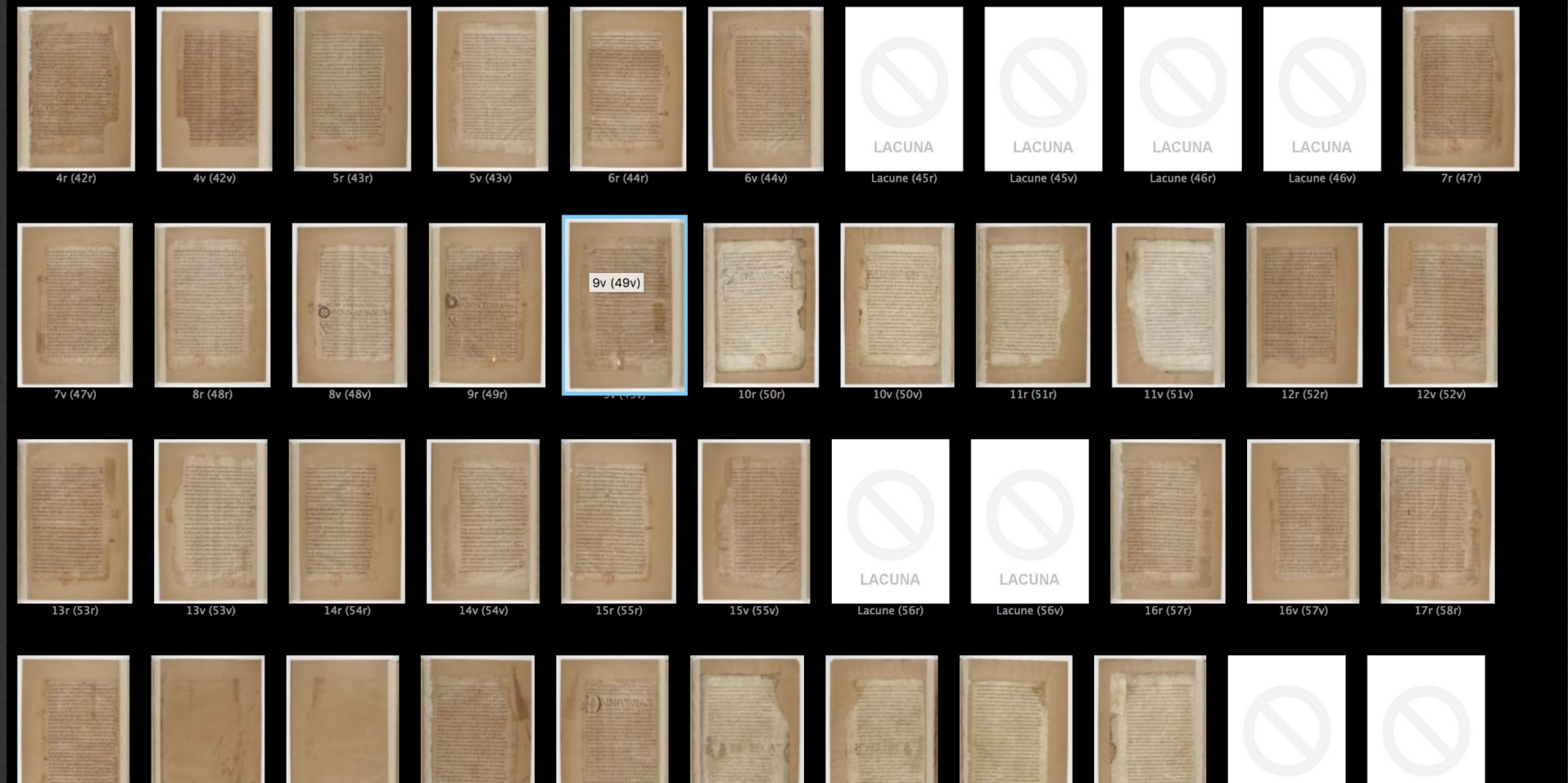
[W3C Web Annotation Data Model](#)

API Presentation - Canevas



API Presentation - Carnevas





Pages manquantes

Démo Biblissima : *Florus dispersus*

<https://demos.biblissima.fr/florus/#florus-dispersus>



Captions Miniatures



Images for f. 067v - 068

No Label

 visible

opacity (100)%



Miniature [Construction de Saint-Denis]

 visible

opacity (disabled)



Un Canevas, plusieurs images (full + detail)

D emo Biblissima "Grandes Chroniques de France - Ch ateauroux BM ms. 5

<http://demos.biblissima-condorcet.fr/chateauroux/>



Captions Miniatures

Images for f. 067v - 068

No Label

 visible

opacity (100)%

Miniature [Construction de Saint-Denis]

 visible

opacity (100)%

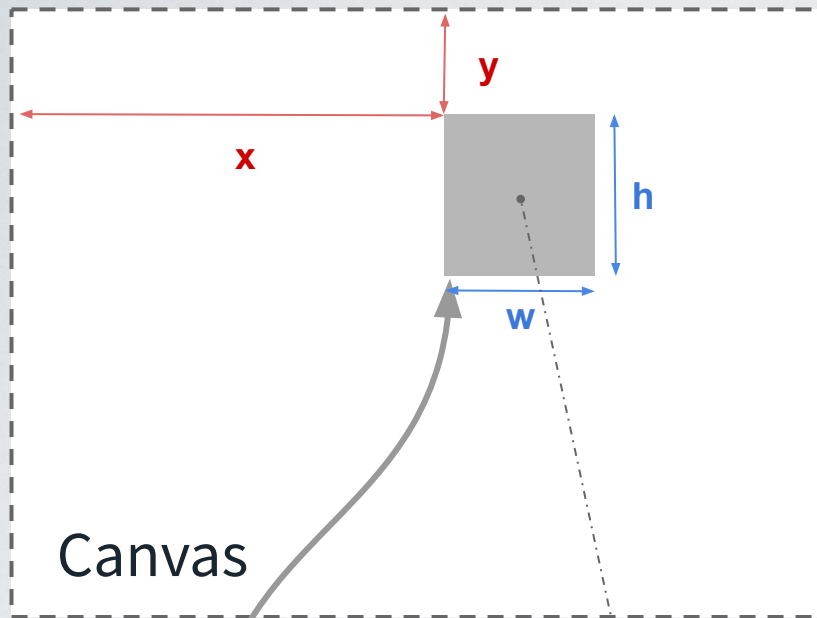


Un Canevas, plusieurs images (full + detail)

D emo Biblissima "Grandes Chroniques de France - Ch ateauroux BM ms. 5

<http://demos.biblissima-condorcet.fr/chateauroux/>

Canevas “multi-images”



xywh=3949,994,1091,1232



Image Gallica (BnF)

<https://gallica.bnf.fr/iiif/ark%3A%2F12148%2Fbtv1b10511139b%2Ff1/full/full/0/native.jpg>

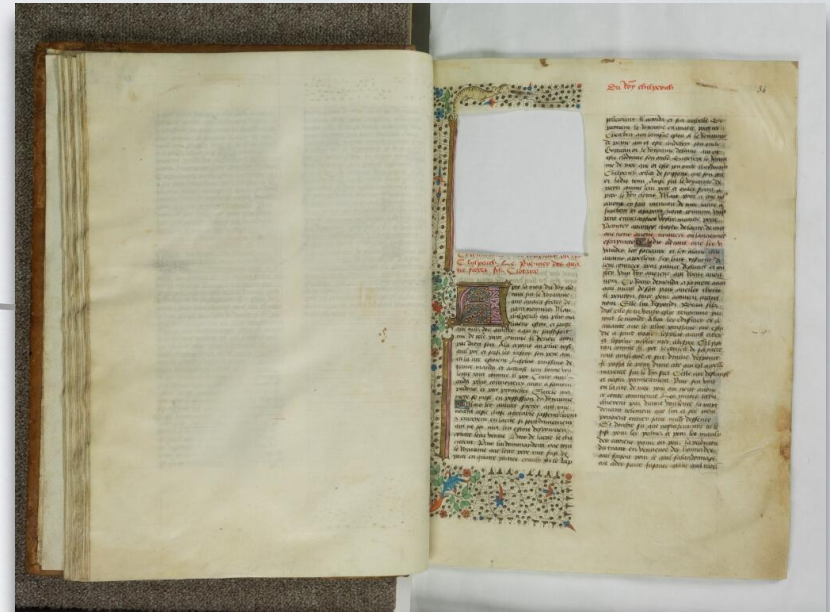


Image BVMM

https://iiif.irht.cnrs.fr/iiif/Ch%C3%A2teauoux/B360446201_MS0005/jp2/B360446201_MS0005_0038/full/full/0/default.jpg

Manifeste Biblissima (reconstruction) :

iiif.biblissima.fr/chateaux/B360446201_MS0005/manifest.json

Représentation JSON d'un Canvas

```
"@id": "http://bvmm.irht.cnrs.fr/iiif/4490/canvas/canvas-981394",  
"@type": "sc:Canvas",  
"label": "f. 033v - 034",  
"height": 5412,  
"width": 7216,  
"images": [  
  {
```

Annotation n°1

```
    "@type": "oa:Annotation",  
    "motivation": "sc:painting",  
    "resource": {  
      "@id": "http://iiif.irht.cnrs.fr/iiif/Châteauroux/B360446201_MS0005/jp2/B360446201_MS0005_0038/full/full/0/default.jpg",  
      "@type": "dctypes:Image",  
      "format": "image/jpeg",  
      "height": 5412,  
      "width": 7216,  
      "service": {  
        "@context": "http://iiif.io/api/image/2/context.json",  
        "@id": "http://iiif.irht.cnrs.fr/iiif/Châteauroux/B360446201_MS0005/jp2/B360446201_MS0005_0038",  
        "profile": "http://iiif.io/api/image/2/level2.json"  
      }  
    },  
    "on": "http://bvmm.irht.cnrs.fr/iiif/4490/canvas/canvas-981394"  
  },  
  {
```

```
    "@type": "oa:Annotation",  
    "motivation": "sc:painting",  
    "resource": {  
      "label": "Miniature [Chilpéric Ier tue Galswinthe, se remarie et est assassiné]",  
      "@id": "http://gallica.bnf.fr/iiif/ark:/12148/btv1b10511139b/f1/full/full/0/native.jpg",  
      "format": "image/jpeg",  
      "@type": "dctypes:Image",  
      "width": 2138,  
      "height": 2414,  
      "service": {  
        "@context": "http://library.stanford.edu/iiif/image-api/1.1/context.json",  
        "profile": "http://library.stanford.edu/iiif/image-api/1.1/compliance.html#level2",  
        "@id": "http://gallica.bnf.fr/iiif/ark:/12148/btv1b10511139b/f1"  
      }  
    },  
    "on": "http://bvmm.irht.cnrs.fr/iiif/2309/canvas/canvas-981394#xywh=3949,994,1091,1232"  
  }  
}
```

```
],  
}
```


Représentation JSON d'un Canvas

```
"@id": "http://bvmm.irht.cnrs.fr/iiif/4490/canvas/canvas-981394",  
"@type": "sc:Canvas",  
"label": "f. 033v - 034",  
"height": 5412,  
"width": 7216,  
"images": [  
  {
```

Annotation n°1

```
    "@type": "oa:Annotation",  
    "motivation": "sc:painting",  
    "resource": {  
      "@id": "http://iiif.irht.cnrs.fr/iiif/Châteauroux/B360446201_MS0005/jp2/B360446201_MS0005_0038/full/full/0/default.jpg",  
      "@type": "dctypes:Image",  
      "format": "image/jpeg",  
      "height": 5412,  
      "width": 7216,
```

Service API Image (IRHT)

```
      "service": {  
        "@context": "http://iiif.io/api/image/2/context.json",  
        "@id": "http://iiif.irht.cnrs.fr/iiif/Châteauroux/B360446201_MS0005/jp2/B360446201_MS0005_0038",  
        "profile": "http://iiif.io/api/image/2/level2.json"  
      }  
    },  
    "on": "http://bvmm.irht.cnrs.fr/iiif/4490/canvas/canvas-981394"  
  },  
  {
```

```
    "@type": "oa:Annotation",  
    "motivation": "sc:painting",  
    "resource": {  
      "label": "Miniature [Chilpéric Ier tue Galswinthe, se remarie et est assassiné]",  
      "@id": "http://gallica.bnf.fr/iiif/ark:/12148/btv1b10511139b/f1/full/full/0/native.jpg",  
      "format": "image/jpeg",  
      "@type": "dctypes:Image",  
      "width": 2138,  
      "height": 2414,  
      "service": {  
        "@context": "http://library.stanford.edu/iiif/image-api/1.1/context.json",  
        "profile": "http://library.stanford.edu/iiif/image-api/1.1/compliance.html#level2",  
        "@id": "http://gallica.bnf.fr/iiif/ark:/12148/btv1b10511139b/f1"  
      }  
    },  
    "on": "http://bvmm.irht.cnrs.fr/iiif/2309/canvas/canvas-981394#xywh=3949,994,1091,1232"  
  }  
]
```

Représentation JSON d'un Canvas

```
"@id": "http://bvmm.irht.cnrs.fr/iiif/4490/canvas/canvas-981394",  
"@type": "sc:Canvas",  
"label": "f. 033v - 034",  
"height": 5412,  
"width": 7216,  
"images": [  
  {
```

Annotation n°1

```
    "@type": "oa:Annotation",  
    "motivation": "sc:painting",  
    "resource": {  
      "@id": "http://iiif.irht.cnrs.fr/iiif/Châteauroux/B360446201_MS0005/jp2/B360446201_MS0005_0038/full/full/0/default.jpg",  
      "@type": "dctypes:Image",  
      "format": "image/jpeg",  
      "height": 5412,  
      "width": 7216,  
      "service": {  
        "@context": "http://iiif.io/api/image/2/context.json",  
        "@id": "http://iiif.irht.cnrs.fr/iiif/Châteauroux/B360446201_MS0005/jp2/B360446201_MS0005_0038",  
        "profile": "http://iiif.io/api/image/2/level2.json"  
      }  
    },  
    "on": "http://bvmm.irht.cnrs.fr/iiif/4490/canvas/canvas-981394"  
  },  
  {
```

Service API Image (IRHT)

```
    "@type": "oa:Annotation",  
    "motivation": "sc:painting",  
    "resource": {  
      "label": "Miniature [Chilpéric Ier tue Galswinthe, se remarie et est assassiné]",  
      "@id": "http://gallica.bnf.fr/iiif/ark:/12148/btv1b10511139b/f1/full/full/0/native.jpg",  
      "format": "image/jpeg",  
      "@type": "dctypes:Image",  
      "width": 2138,  
      "height": 2414,  
      "service": {  
        "@context": "http://library.stanford.edu/iiif/image-api/1.1/context.json",  
        "profile": "http://library.stanford.edu/iiif/image-api/1.1/compliance.html#level2",  
        "@id": "http://gallica.bnf.fr/iiif/ark:/12148/btv1b10511139b/f1"  
      }  
    },  
    "on": "http://bvmm.irht.cnrs.fr/iiif/2309/canvas/canvas-981394#xywh=3949,994,1091,1232"  
  }  
],  
}
```

Annotation n°2

Représentation JSON d'un Canvas

```
"@id": "http://bvmm.irht.cnrs.fr/iiif/4490/canvas/canvas-981394",  
"@type": "sc:Canvas",  
"label": "f. 033v - 034",  
"height": 5412,  
"width": 7216,  
"images": [  
  {  
    "@type": "oa:Annotation",  
    "motivation": "sc:painting",  
    "resource": {  
      "@id": "http://iiif.irht.cnrs.fr/iiif/Châteauroux/B360446201_MS0005/jp2/B360446201_MS0005_0038/full/full/0/default.jpg",  
      "@type": "dctypes:Image",  
      "format": "image/jpeg",  
      "height": 5412,  
      "width": 7216,  
      "service": {  
        "@context": "http://iiif.io/api/image/2/context.json",  
        "@id": "http://iiif.irht.cnrs.fr/iiif/Châteauroux/B360446201_MS0005/jp2/B360446201_MS0005_0038",  
        "profile": "http://iiif.io/api/image/2/level2.json"  
      }  
    },  
    "on": "http://bvmm.irht.cnrs.fr/iiif/4490/canvas/canvas-981394"  
  },  
  {  
    "@type": "oa:Annotation",  
    "motivation": "sc:painting",  
    "resource": {  
      "label": "Miniature [Chilpéric Ier tue Galswinthe, se remarie et est assassiné]",  
      "@id": "http://gallica.bnf.fr/iiif/ark:/12148/btv1b10511139b/f1/full/full/0/native.jpg",  
      "format": "image/jpeg",  
      "@type": "dctypes:Image",  
      "width": 2138,  
      "height": 2414,  
      "service": {  
        "@context": "http://library.stanford.edu/iiif/image-api/1.1/context.json",  
        "profile": "http://library.stanford.edu/iiif/image-api/1.1/compliance.html#level2",  
        "@id": "http://gallica.bnf.fr/iiif/ark:/12148/btv1b10511139b/f1"  
      }  
    },  
    "on": "http://bvmm.irht.cnrs.fr/iiif/2309/canvas/canvas-981394#xywh=3949,994,1091,1232"  
  }  
]
```

Annotation n°1

Service API Image (IRHT)

Annotation n°2

Service API Image (Gallica)

Représentation JSON d'un Canvas

```
"@id": "http://bvmm.irht.cnrs.fr/iiif/4490/canvas/canvas-981394",  
"@type": "sc:Canvas",  
"label": "f. 033v - 034",  
"height": 5412,  
"width": 7216,  
"images": [  
  {
```

Annotation n°1

```
    "@type": "oa:Annotation",  
    "motivation": "sc:painting",  
    "resource": {  
      "@id": "http://iiif.irht.cnrs.fr/iiif/Châteauroux/B360446201_MS0005/jp2/B360446201_MS0005_0038/full/full/0/default.jpg",  
      "@type": "dctypes:Image",  
      "format": "image/jpeg",  
      "height": 5412,  
      "width": 7216,  
      "service": {  
        "@context": "http://iiif.io/api/image/2/context.json",  
        "@id": "http://iiif.irht.cnrs.fr/iiif/Châteauroux/B360446201_MS0005/jp2/B360446201_MS0005_0038",  
        "profile": "http://iiif.io/api/image/2/level2.json"  
      }  
    },  
    "on": "http://bvmm.irht.cnrs.fr/iiif/4490/canvas/canvas-981394"  
  },  
  {
```

Service API Image (IRHT)

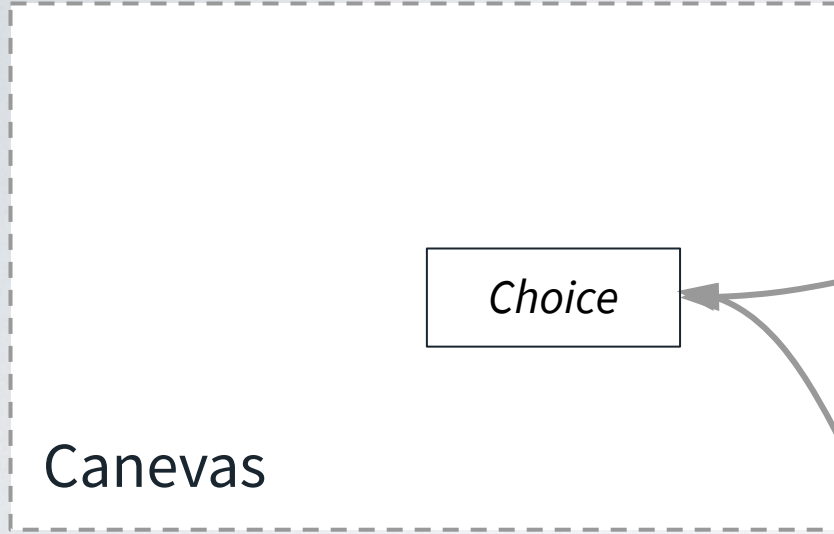
Annotation n°2

```
    "@type": "oa:Annotation",  
    "motivation": "sc:painting",  
    "resource": {  
      "label": "Miniature [Chilpéric Ier tue Galswinthe, se remarie et est assassiné]",  
      "@id": "http://gallica.bnf.fr/iiif/ark:/12148/btv1b10511139b/f1/full/full/0/native.jpg",  
      "format": "image/jpeg",  
      "@type": "dctypes:Image",  
      "width": 2138,  
      "height": 2414,  
      "service": {  
        "@context": "http://library.stanford.edu/iiif/image-api/1.1/context.json",  
        "profile": "http://library.stanford.edu/iiif/image-api/1.1/compliance.html#level2",  
        "@id": "http://gallica.bnf.fr/iiif/ark:/12148/btv1b10511139b/f1"  
      }  
    },  
    "on": "http://bvmm.irht.cnrs.fr/iiif/2309/canvas/canvas-981394#xywh=3949,994,1091,1232"
```

Service API Image (Gallica)

zone du Canevas cible de l'annotation

Un Canvas “multi-images” (cas 2 : “Image Choice”)



Images Wellcome
Library



Démo Leaflet (Tom Crane) :

<http://resources.digirati.com/iiif/an-introduction-to-iiif/dee-sbs.html>

*John Dee performing an experiment before Queen Elizabeth I. Oil painting by Henry Gillard Glindoni
(Wellcome Library <https://wellcomelibrary.org/item/b14658197>)*

Layers

- Osborn fa1, 53r,
1_global_rgb_0_1sec_f11_f0_4m-
G
 100 %
- Osborn fa1, 53r,
1_light3_rgb_0_4sec_f11
 100 %
- Osborn fa1, 53r,
1_light2_rgb_0_4sec_f11
 100 %
- Osborn fa1, 53r,
1_global_rgb_0_1sec_f11_f0_4m
 100 %
- Osborn fa1, 53r
 100 %

106 of 401 • Osborn fa1, 53r

Un Canevas, plusieurs images (images multispectrales)

Yale, Osborn fa1, f. 53r

Index Layers

Images for f.87v

No Label

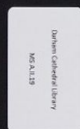


visible
opacity (100%)

No Label



visible
opacity (disabled)



Un Canevas, plusieurs images (rabats)

Mirador Durham University (Richard Higgins) :

<https://iiif.durham.ac.uk/index.html?manifest=t1mz029p473h&canvas=t1t05741s32v>

Durham Cathedral Library MS. A.II.19

Index Layers

Images for f.87v

No Label visible
opacity (100%)

No Label visible
opacity (100%)

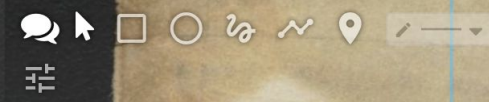


Un Canevas, plusieurs images (rabats)

Mirador Durham University (Richard Higgins) :

<https://iiif.durham.ac.uk/index.html?manifest=t1mz029p473h&canvas=t1t05741s32v>

Durham Cathedral Library MS. A.II.19



omnia & quomodo scriptum
 est in filiū hoīs ut multa patia
 tur et cōtēpnat. S; dico uobis
 qd & helyas uenit. Et fecerunt illi
 q̄aīq; uoluerō sic scriptū ē de eo.
 Et ueniens ad discipulos suos uidit
 turbā magnā circa eos et scribas
 conquirentes cū illis. & confestim
 omīs poplū uidens ih̄m stupescit
 et expauerit. & accurrens

fi. q̄si. Siō de x̄ passione pphe mutapharie sep
 serunt. sic i helyas multa passurus. Restatur
 omīa pmo corda hominū illius tempis ad cōcedendū
 in xpō. resistendū autē deū ponē aiām p xpō.
 Non; requies sub sole. semp paruulos inua
 dia. maguos p̄cutunt fulgura montes. alij discon
 tes cū fide. alij inuidioses cū f̄ctū ad eoliam ue
 niunt.
 Qd quererent euāgēlīstā n̄ dic. s; pot̄ intelli
 gi de hoc q̄stione n̄tā fuisse q̄ discipulū demo
 niacū quim medio erat n̄ possent libare. h
 enī ex sequentib; pot̄ conici. i interrogat e. rē.
 Nota quod loca reb; conueniunt congruēt.
 In monte orat̄ r̄sformata: discipulū archana
 sue maiestatis ap̄t. inimo a turba exopto. mi
 serozū fletu pulsāt. Sur sū discipulū mistiā reg
 ni reserat. deorsū turbis peccā infidelitatis ex
 ybrat. Sur sū uocē pr̄s his qui audire p̄nt
 pandit. deorsū malos sp̄o expellit. nun̄ in p̄
 v̄tōy analit̄e alij descendit. d̄c̄ a. cō

Et veniens ad discipulos suos vidit

Transcription (texte annotant des parties de Canevas)

Annotations



spiritus sanctus tres quidem
persone set una essen

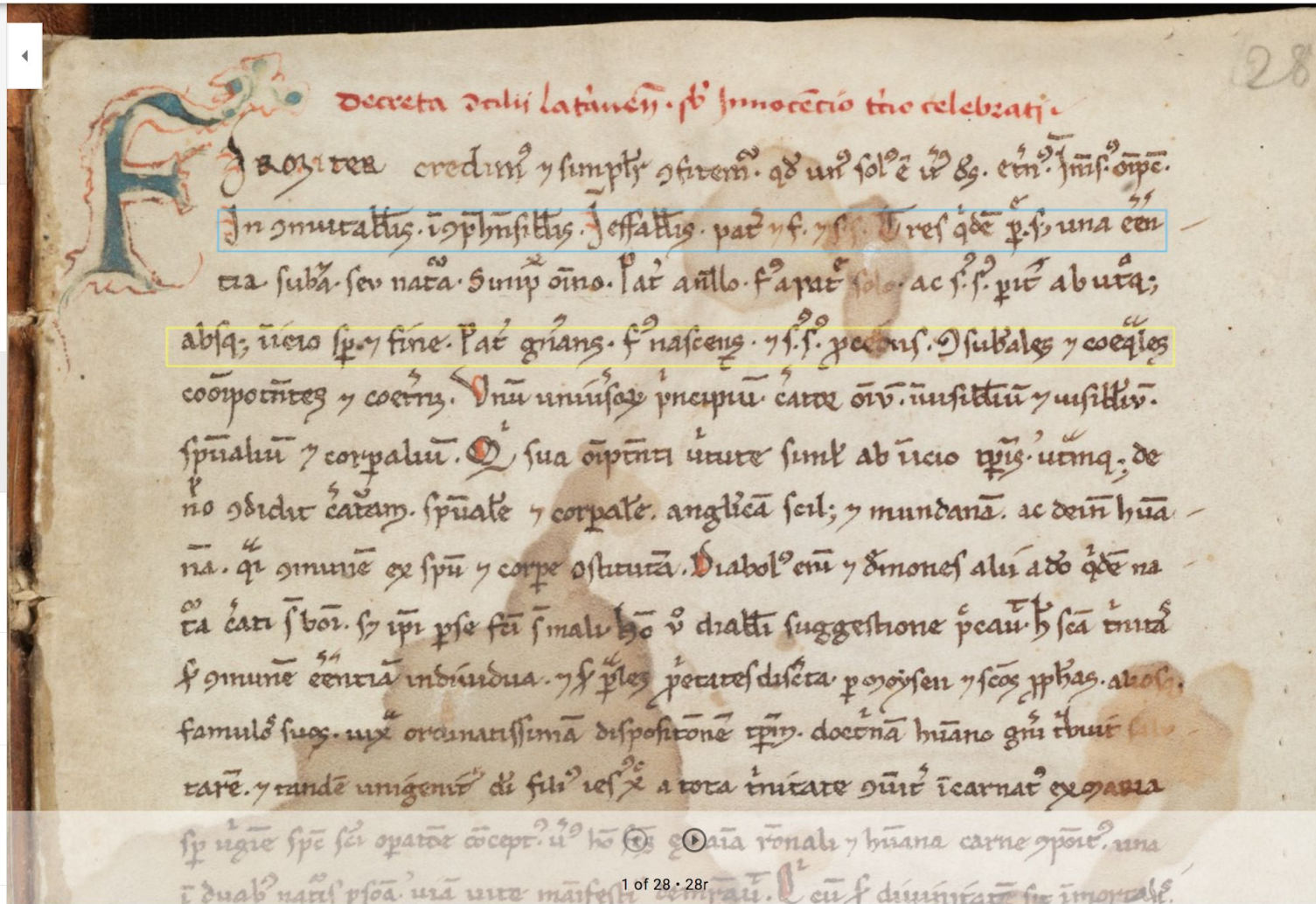
tia substantia seu natura
simplex omnino. Pater a nullo,
Filius autem a solo Patre, ac
Spiritus Sanctus pariter ab
utroque

absque initio semper et fine.
Pater generans, Filius nascens
et Spiritus Sanctus procedens,
consubstantiales et coequales,

coomnipotentes et coeterni,
unum uniuersorum principium,
creator omnium inuisibilium et
uisibilium,

spiritualium et corporalium, qui
sua omnipotenti uirtute simul
ab initio temporis utramque de

nichilo condidit creaturam
spiritualem et corporalem,
angelicam uidelicet et
mundanam, ac deinde huma



Transcription (texte annotant des parties de Canevas)

Annotations



Showing 37 annotations

ITEM: [FOL. 5B]

Venus

الزهرة

al-zuharah

English

Venus

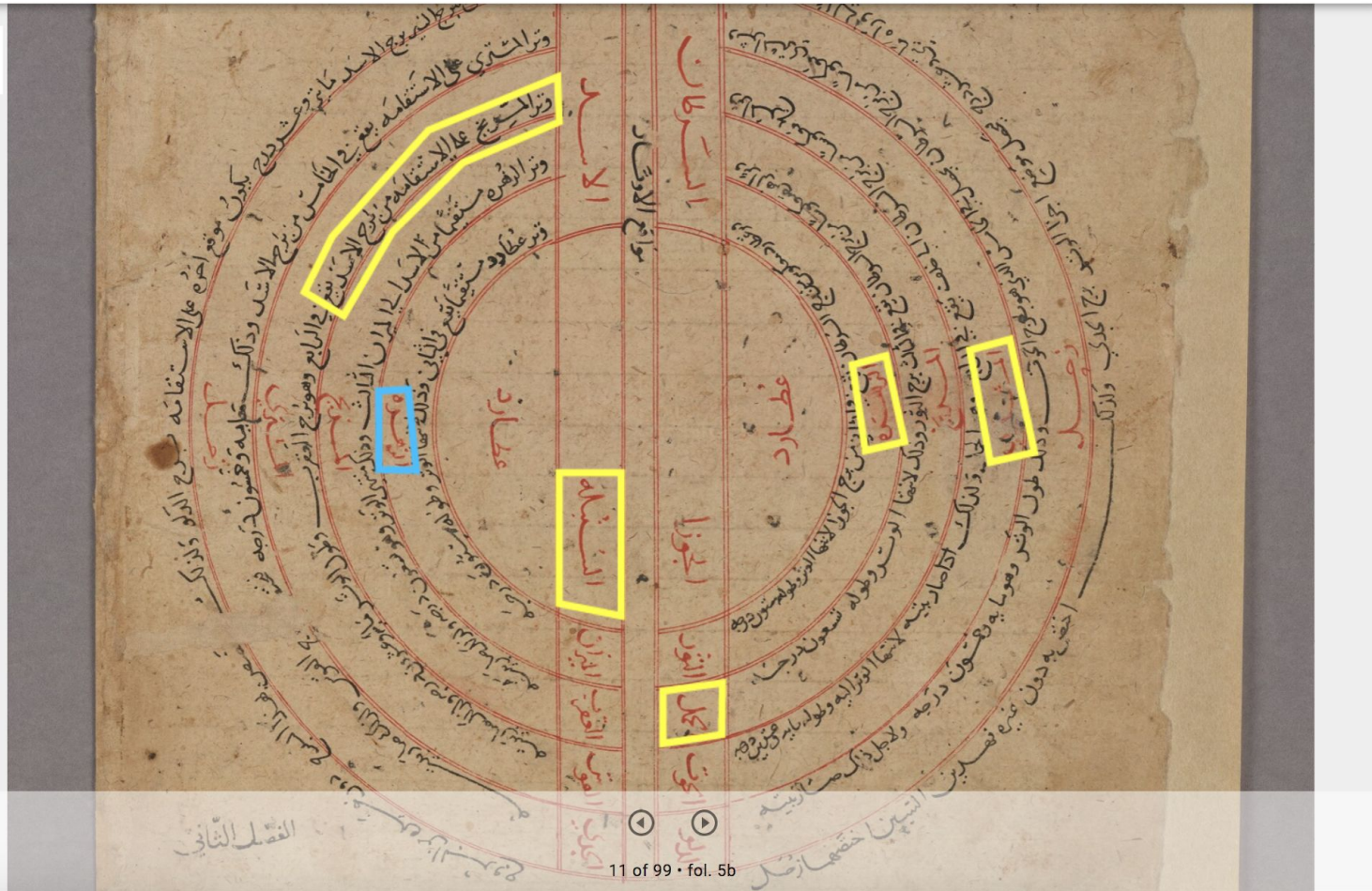
Arabic

الزهرة

Arabic (Romanized)

al-zuharah

The arc of Mars, in direct motion from Leo, reaches the fourth sign, which is Scorpio. The angular distance is 120 degrees. Scorpio is therefore its house.



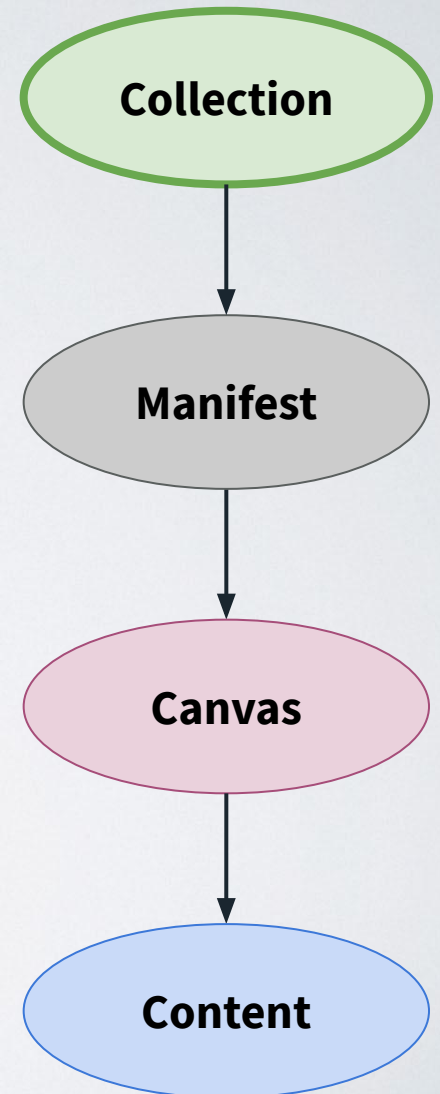
Transcription (annotations non-rectangulaires)

[Bodleian Library MS. Arab. c. 90, fol. 5b](#)

API Presentation - Collections

Collections pour des lots de *Manifestes* :

- Charger des ensembles de *Manifestes*, pré-définis ou constitués par des utilisateurs
- Visualiser des listes ou hiérarchies de *Manifestes* reliés entre eux
- Représenter des livres en plusieurs volumes

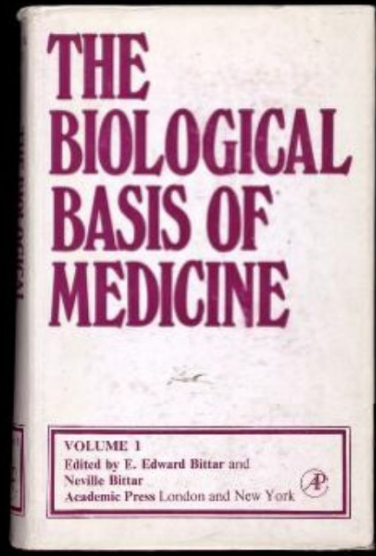


CONTENTS <<

Index Thumbnails

- ▣ Volume 1
 - Front Cover
 - Title Page
 - Table of Contents
 - Back Cover
- Volume 2
- Volume 3
- Volume 4
- Volume 5
- Volume 6

The biological basis of medicine



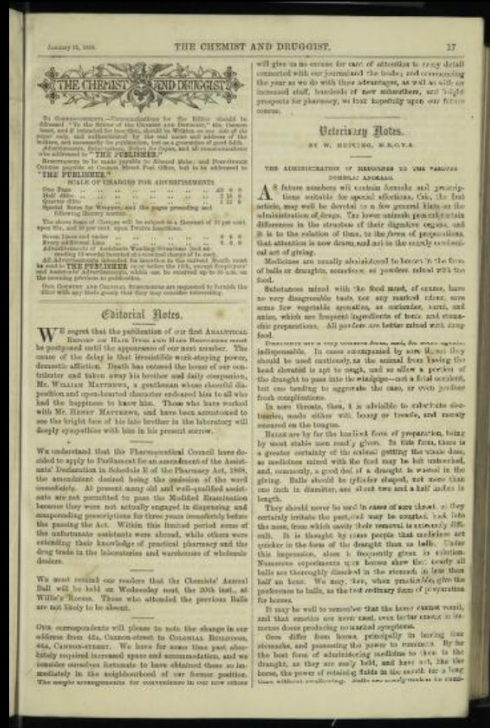
MORE INFORMATION <<

Search within this item: 🔍

[Livre en plusieurs volumes](#) (Wellcome Library) :
1 Collection, 6 Manifests (1 par volume)

Sort By: date volume

- Volume 1, 1859
- Volume 5, 1864
- Volume 6, 1865
- Volume 7, 1866
- Volume 8, 1867
- Volume 9, 1868
- Volume 10, 1869
- 15. January 1869
 - Title Page
 - 15. February 1869
 - 15. March 1869
 - 15. April 1869
 - 15. May 1869
 - 15. June 1869
 - 15. July 1869
 - 15. August 1869
 - 15. September 1869
 - 15. October 1869



Série de périodiques (Wellcome Library) :

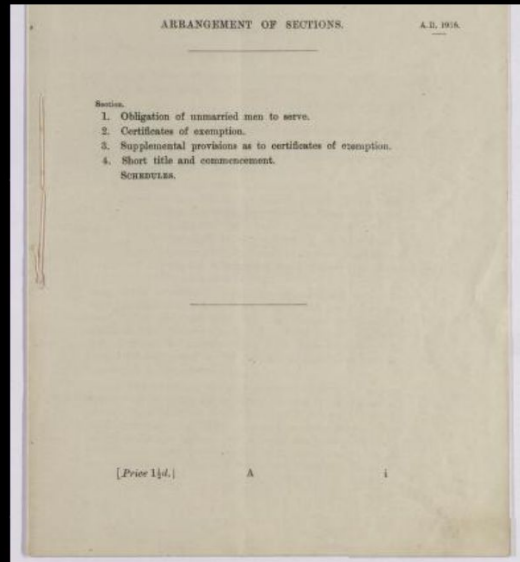
1 Collection avec autant de sous-collections que de volumes (annuel), 1 Manifest pour chaque numéro (mensuel)

CONTENTS << Index Thumbnails

Copies of Military Service Acts and proclamations, 1916-18

MORE INFORMATION <<

- Statutes,
- Copies of Military Service Acts and proclamations,
- Group and Class Systems: Notes on Administration, Feb,
- The Recruiting Guide, Jan,
- The Law and Practice of Military Conscription under the Military Service Acts,
- Bundle of Local Government circulars relating to the work of the Tribunals,
- Bundle of Ministry of National Service circulars relating to the work of the Tribunals,
- Bundle of miscellaneous government circulars associated with the tribunal's work, from the Ministry of Food, Board of Agriculture, Army Council ...,
- Cardiganshire Appeal Tribunal: Minutes, Correspondence, Working Papers,
- District Appeal Papers,
- Miscellaneous,



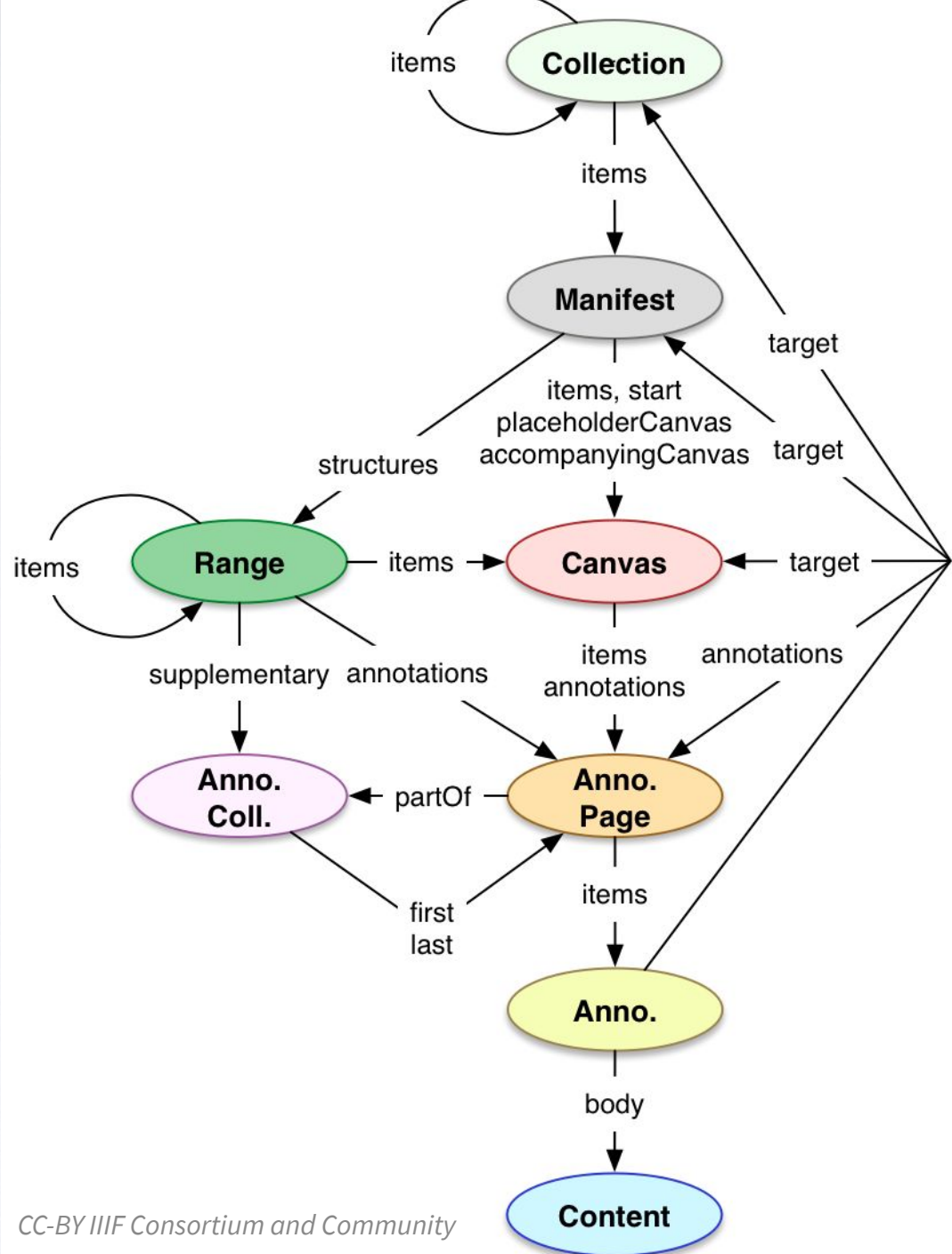
ATTRIBUTION ✕
 Llyfrgell Genedlaethol Cymru –
 The National Library of Wales



Fonds d'archives (National Library of Wales) :

1 Collection avec autant de sous-collections que de sous-fonds, 1 Manifest pour chaque document

Tous les types de ressources et leurs relations
(Presentation API 3.0)



API Presentation - Implémentations

Plateformes et outils de visualisation



Universal Viewer



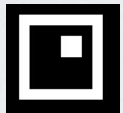
Mirador



+ Éditeurs de Manifestes

+ Outils d'expos virtuelles

+ Plateformes de transcription



IIF Curation Platform

Canvas Panel

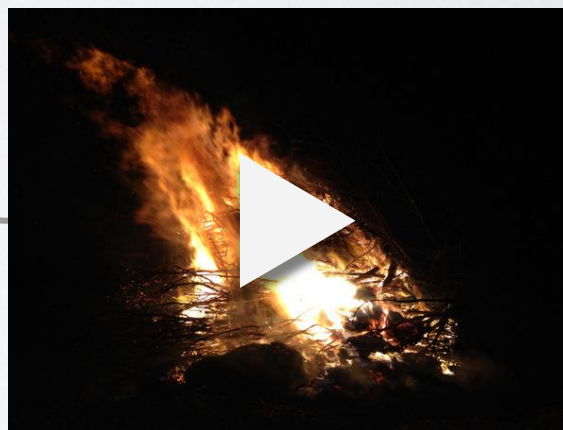
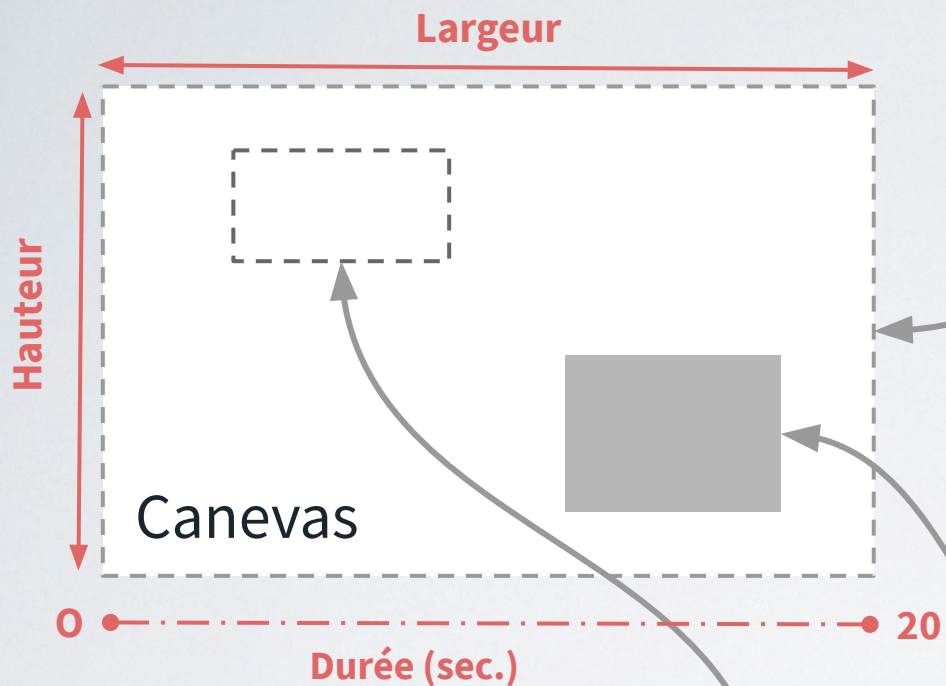
Et bien d'autres...

<https://github.com/IIF/awesome-iiif>

API Présentation version 3

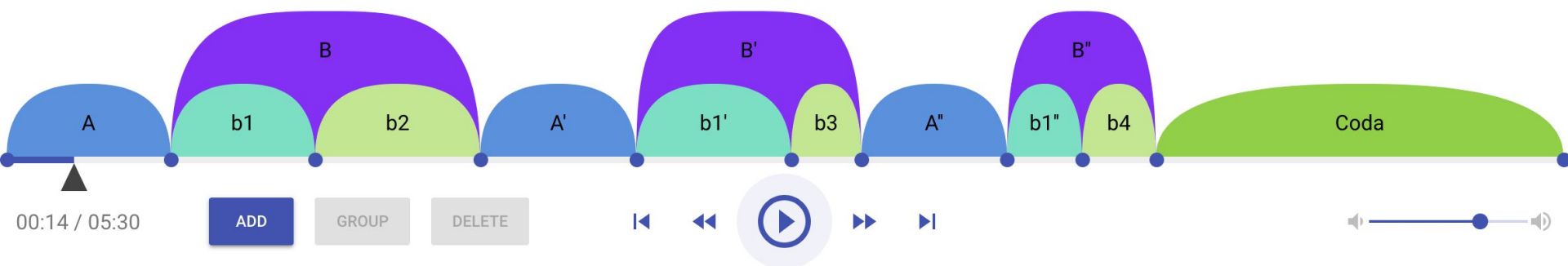
- prise en charge des ressources **audio et vidéo**
- ajout d'une dimension temporelle au Canvas (propriété "*duration*")
- possibilité d'annoter une **zone spatiale (xywh)** du Canvas ou une **étendue temporelle**, pour y associer du contenu (images, texte ou autre)
 - ◆ `<uri_canvas>/#xywh=70,60,500,100&t=5,20`
- pour l'audio, pas de dimension spatiale (Canvas sans hauteur/largeur), uniquement temporelle

III F audio + vidéo



commentaire
(annotation textuelle)
[4 à 10 sec.]

Vidéo [10 à 15 sec.]



Annotations

A

The serenely simple violinistic A theme of this Nocturne hovers gently over a Db pedal and wide left-hand arpeggiations.

Project

Chopin, Nocturne in D-Flat Major

This Nocturne was composed in 1835 and is dedicated to Mme. la Comtesse d'Appony. The work alternates between two main ideas (A B A B A B + Coda). The first of these ideas always returns in the tonic with only slight modifications, (suggesting a rondo theme), while the second idea is developmental, moving through several keys. One might interpret the organization of this Nocturne as a rondo, or alternatively as strophic (A A' A'' Coda), in which each strophe consists of two parts (A and B).

Source: http://www.dlib.indiana.edu/~jwd/Chopin_nocturne.mp3

Annotation audio (sous forme de Ranges) avec *IIIF Timeliner* (University of Indiana) :

<https://iiif-timeliner.netlify.com>



The video player displays a scene where a hand holds a spray can labeled "PESTIC" and sprays a yellow insect on a wall. The video player interface includes a progress bar at 00:06 / 00:35, a volume control slider, and playback controls (play, pause, stop, next, previous). An attribution box is overlaid on the bottom right of the video frame.

ATTRIBUTION ✕

College of Agriculture and Life Sciences Audiovisual Materials, University Archives Audiovisual Collection (JA024.002), Special Collections Research Center at NCSU Libraries

More information icon: << MORE INFORMATION >>

Settings icon: ⚙️

Fullscreen icon: 🗖️

Lecture de vidéo dans *Universal Viewer* (NCSU Libraries)

<http://universalviewer.io/examples/#?manifest=https%3A%2F%2Fd.lib.ncsu.edu%2Fcollections%2Fcatalog%2Fua024-002-bx0149-066-001%2Fmanifest>

Growing tea sprout



Media info: High-speed motion picture of growing tea sprout. Shot in 2008.

Show WebAnnot

Hide Annotation

Document info ([iif manifest v.3](#)) en ▾:

- **Description:** A small sprout at the base of the leaf was moving slowly. Once it started opening, it grew rapidly, and turned into
- **Attribution:** NHK Creative Library [Tea, the growing sprout](#)
- **Rights:** <http://www1.nhk.or.jp/creative/rule.html>

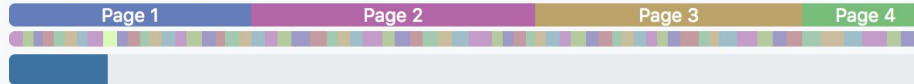
metadata ▾

- **Program Series:** Einstein"s eyes
- **Program Title:** The secrets of tea you might not know
- **First Broadcasted:** 2008-06-03

Annotation de vidéos (Masahide KANZAKI) :

<http://www.kanzaki.com/works/2016/pub/image-annotator?u=/works/2017/annotation/tea-sprout/manifest.json>

Étude in F Minor



Sources Valentina Lisitsa



Etude in F Minor
op. 10, no. 9
an electronic transcriptions
Frédéric Chopin

Allegro molto agitato

Piano

p *cresc.* *con forza*

legatissimo

5 *p* *f* *ritard.* *cresc.*

segue

9 *a tempo* *sotto voce* *sempre sotto voce*

sempre legatissimo

13

The image displays a musical score for the Étude in F Minor, op. 10, no. 9 by Frédéric Chopin. The score is presented in a digital format, likely from a software application. It features a grand staff with a treble and bass clef. The tempo is marked 'Allegro molto agitato'. The score includes various musical notations such as dynamics (piano, forte, crescendo, decrescendo), articulations (legatissimo, sotto voce), and performance instructions (ritardando). The score is divided into measures, with measure numbers 1, 5, 9, and 13 indicated. The score is transcribed for piano.

Synchronisation vidéo/transcription MEI, IIF A/V Player (DDMAL) :

<https://ddmal.github.io/IIF-AV-player/>

Pleins d'autres aspects à aborder...

- 4 autres APIs IIIF :
 - ◆ *Content Search* (👉 Exercice 2 de l'atelier)
 - ◆ *Authentication*
 - ◆ *Change Discovery*
 - ◆ *Content State* (👉 démo Exercice 1 de l'atelier)
- Implémentation technique de IIIF : comment faire ? 👉 IIIF360
- “Discovery” : comment trouver des ressources IIIF ?
- Relation de IIIF avec d'autres modèles ou formats de métadonnées (TEI, EAD, EDM, LinkedArt...)
- IIIF et IA / IIIF et 3D / IIIF et cartographie, etc.

Plus d'infos sur IIF (en français) :

iiif.biblissima.fr

Besoin d'aide sur IIF ?

iiif360@listes.campus-condorcet.fr

Questions ?

Merci de votre attention !

Régis ROBINEAU

(Biblissima - Campus Condorcet - EPHE-PSL)

regis.robineau [at] biblissima-condorcet.fr

regis.robineau [at] ephe.psl.eu



@regisrob